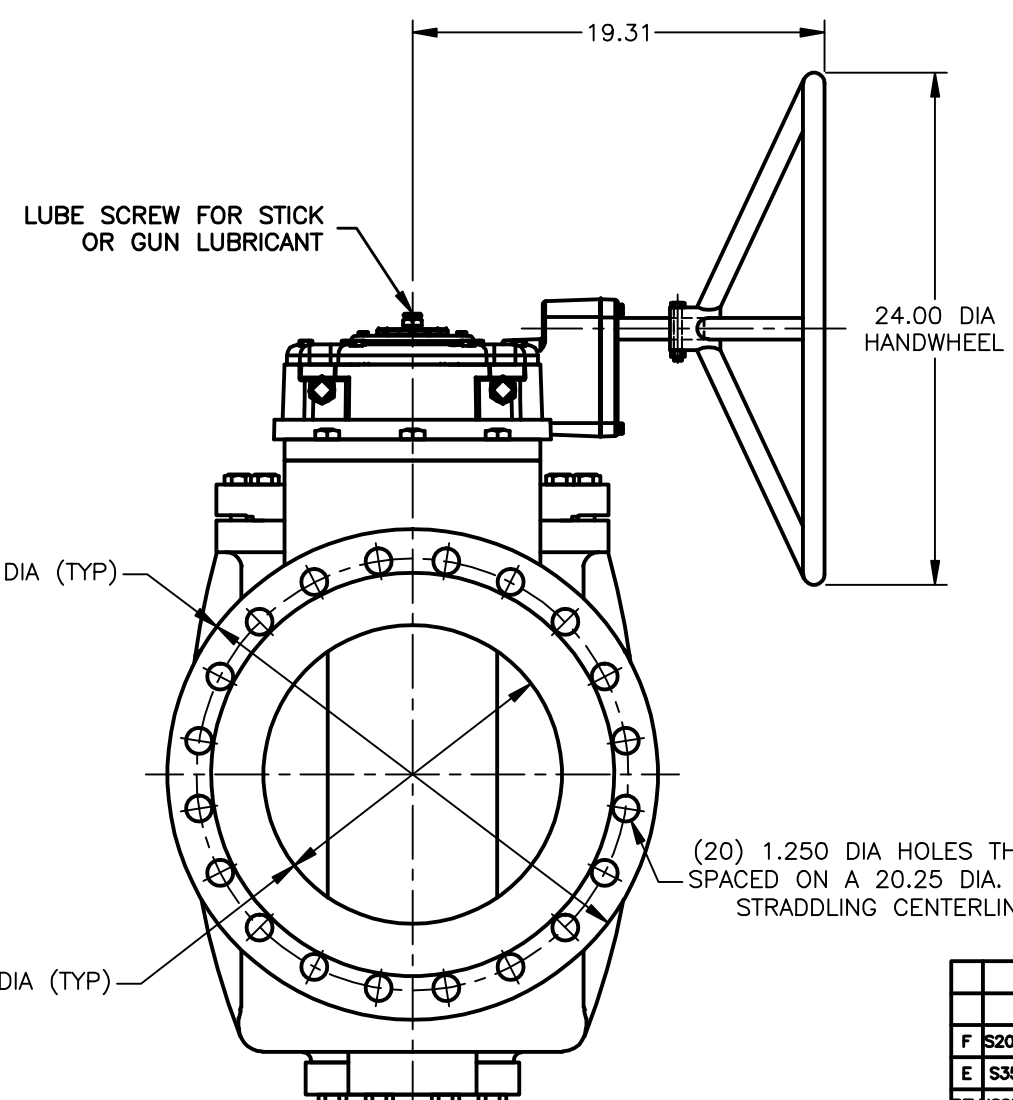
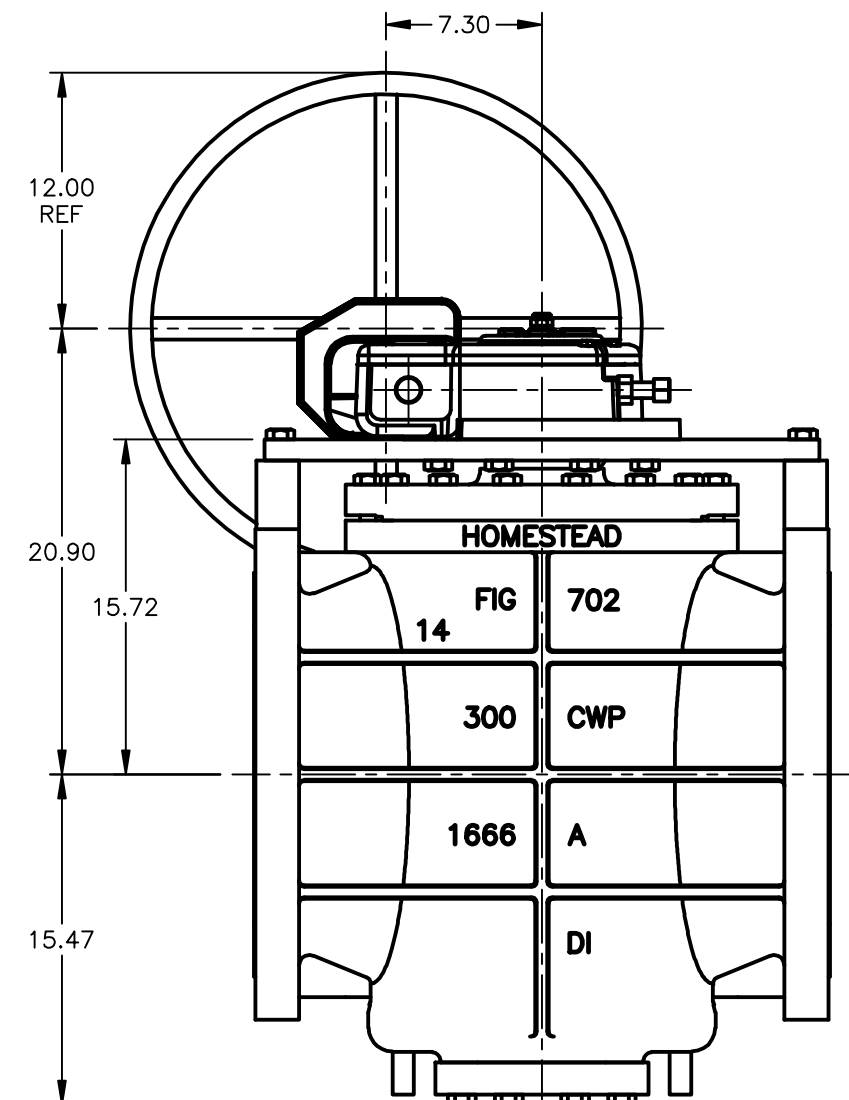
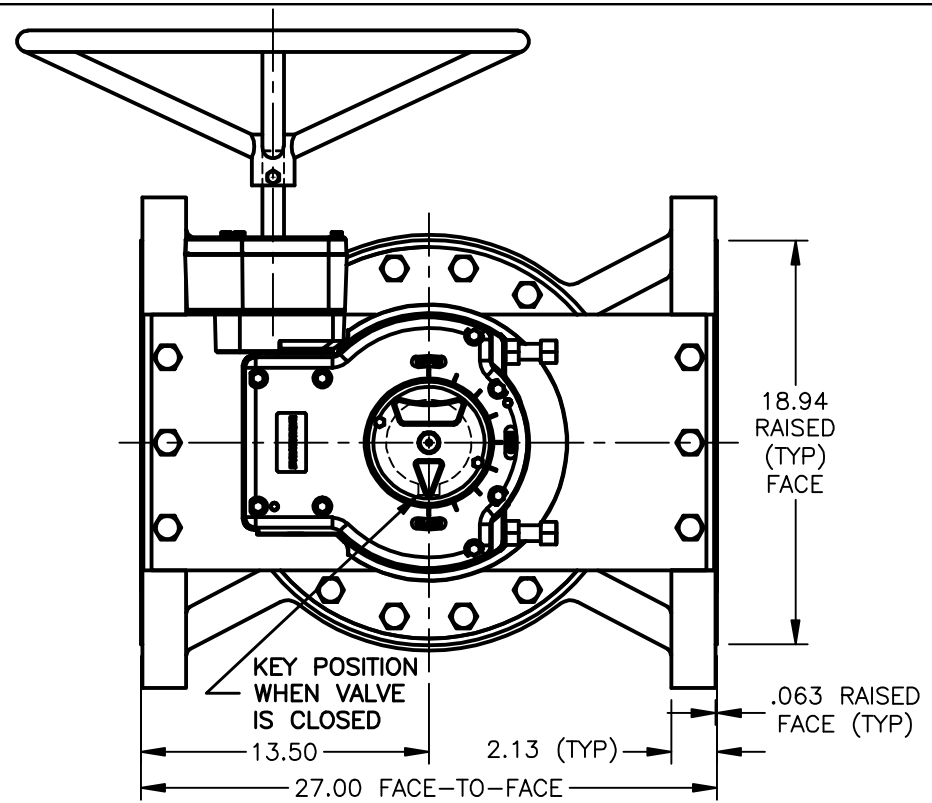


ANSI CLASS 250 LUBRICATED PLUG VALVE WITH GEAR AND HANDWHEEL

GENERAL SPECIFICATIONS:

1. FLANGES CONFORM TO ANSI B16.1 "CAST IRON PIPE FLANGES AND FLANGE FITTINGS", CLASS 250.
2. FACE-TO-FACE INCLUDES .06" RAISED FACES.
3. FOR FLAMMABLE FLUID OF GAS APPLICATION, THE MAXIMUM OPERATING PRESSURE IS 125 PSI.



(20) 1.250 DIA HOLES THRU EQUALLY SPACED ON A 20.25 DIA. BOLT CIRCLE STRADDLING CENTERLINES (TYP)

20	SEALANT	AS REQUIRED
19	HEX CAP SCREW	STEEL
18	MOUNTING PLATE	STEEL
17	O-RING	NITRILE
16	HEX CAP SCREW	STEEL
15	KEY	STEEL
14	GEAR OPERATOR	COMMERCIAL
13	CHECK VALVE	STEEL
12	O-RING	VITON
11	LUBE SCREW	STEEL
10	HEX CAP SCREW	STEEL
9	O-RING	NITRILE
8	CAP	A536 65-45-12
7	HEAD SEAL	PTFE
6	DISC	PTFE
5	DISC	STEEL
4	SPRING	STEEL
3	BONNET	A36 STEEL
2	PLUG	A536 65-45-12
1	BODY	A536 65-45-12
NO.	PART NAME	MATERIAL

PARTS LIST						
HOMESTEAD VALVES						
A DIVISION OF OLSON TECHNOLOGIES, INC.						
160 WALNUT ST. ALLENTOWN, PA. 18102 (610) 770-1100						
TITLE						
14" FIG 702G ASSEMBLY						
LUBRICATED PLUG VALVES						
NUMBER						
71016						
D	R287	HCS	TRS	5/04/98		
C	9Q95	RAH	RAH	3/15/95		
F	S2075	ND		11/15/21	B	9Q74
E	S352	RAH	DED	8/31/02	A	8Q86
REV	ISSUE	BY	APPR	DATE	REV	ISSUE
BY					BY	
DATE					DATE	