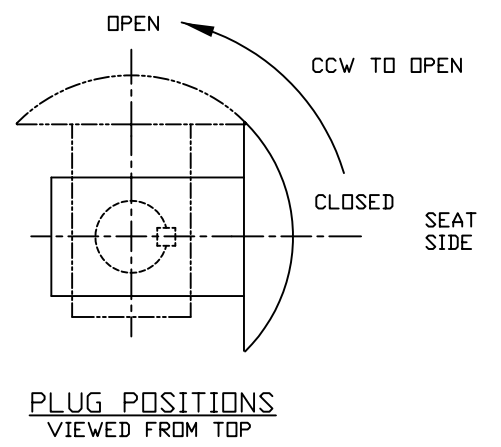
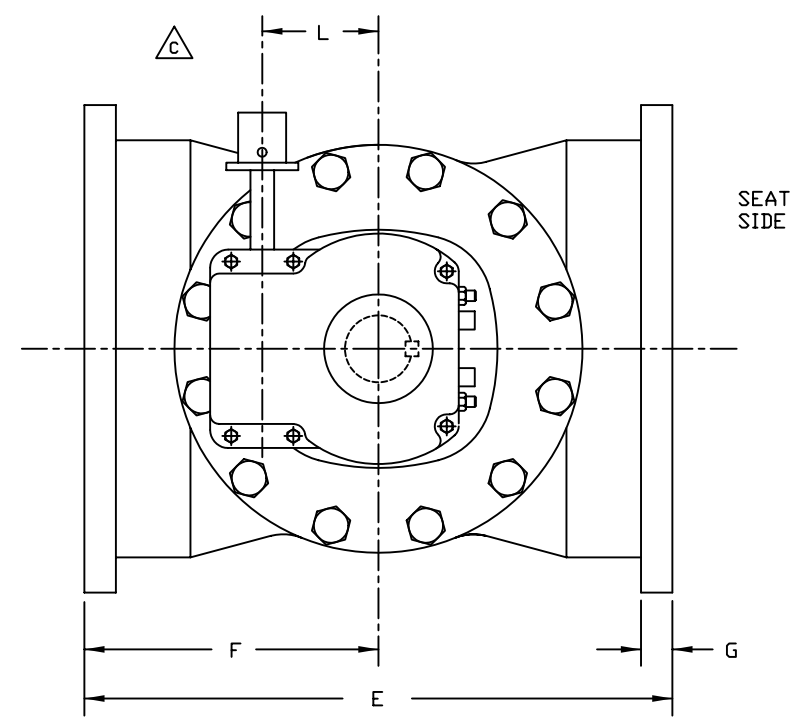
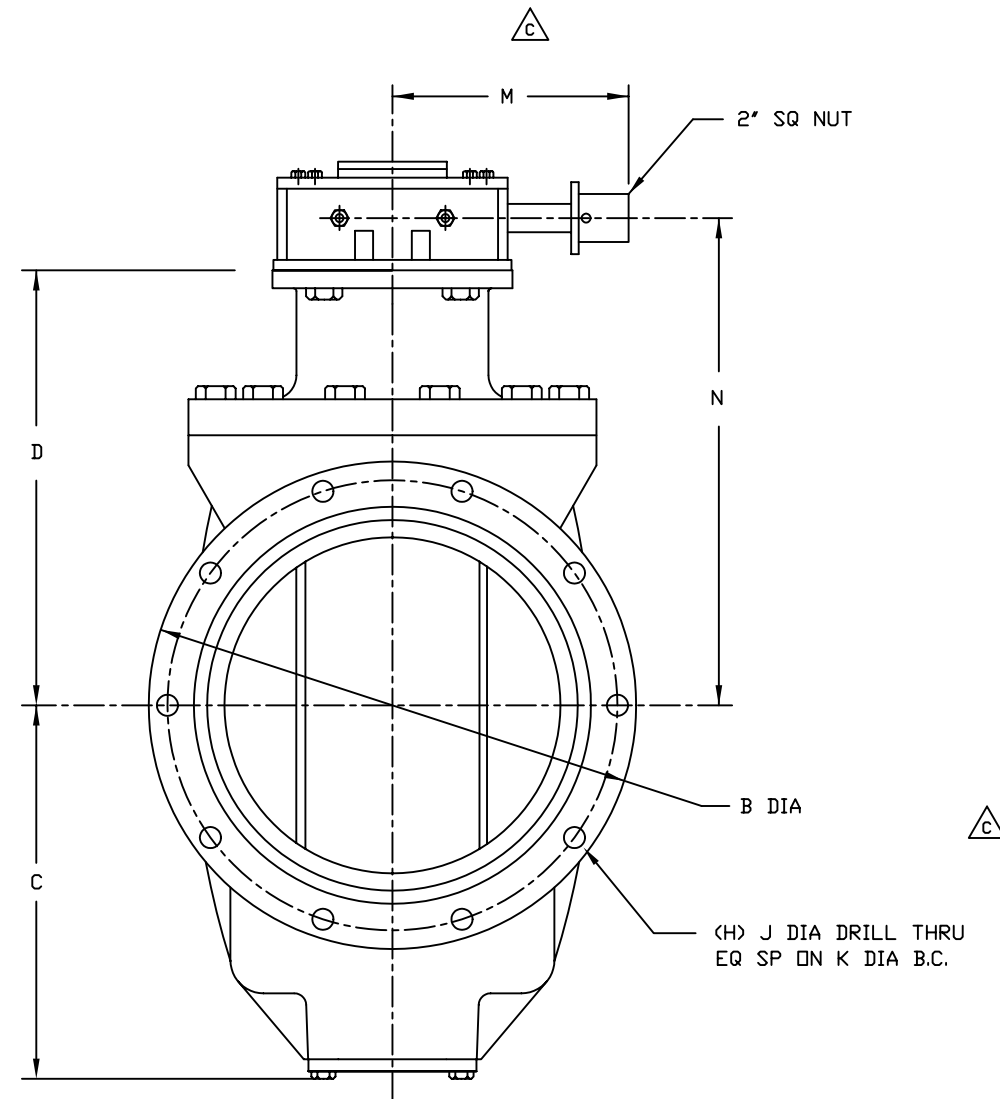
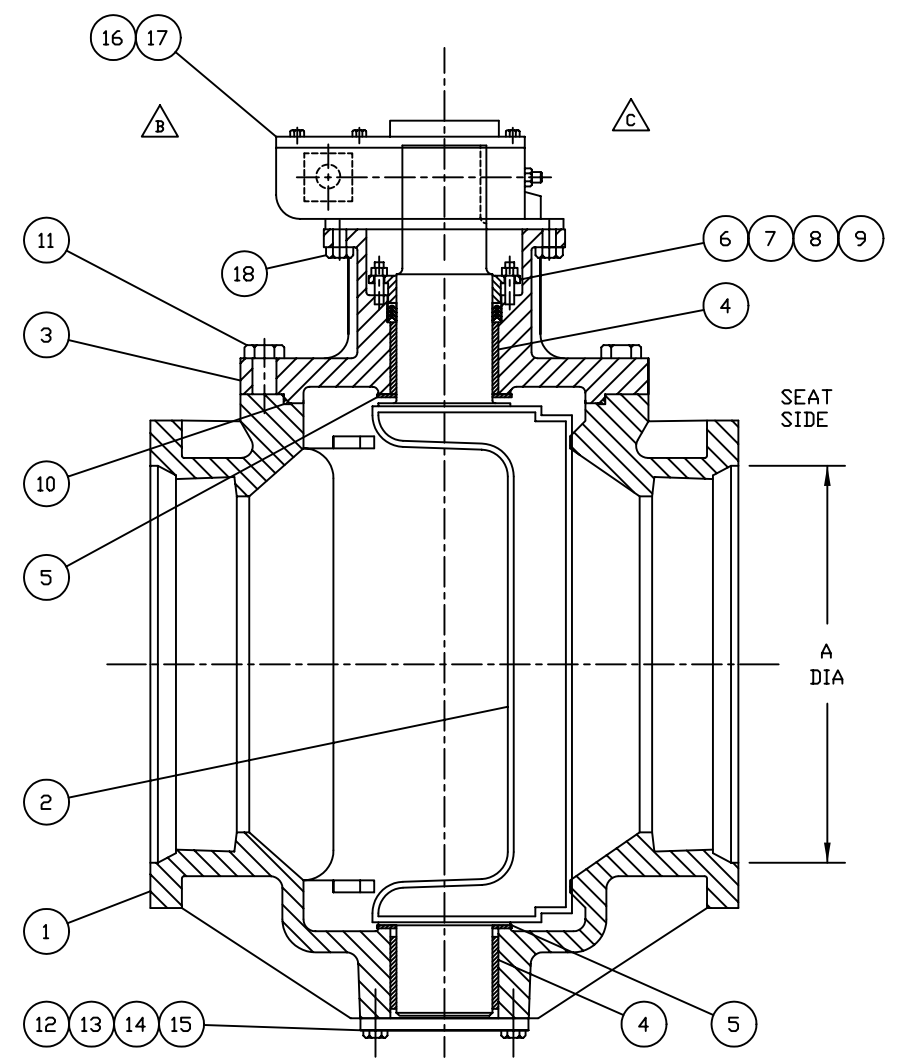


TABLE OF DIMENSIONS (INCHES)													
VALVE SIZE	A	B	C	D	E	F	G	H	J	K	L	M	N
14.00	16.54	20.31	15.81	18.12	24.50	12.25	1.31	10	.875	18.75	4.84	9.84	20.38
16.00	18.64	22.56	17.38	20.25	27.25	13.62	1.38	12	.875	21.00	6.14	10.82	22.19
18.00	20.74	24.83	19.00	21.25	29.25	14.62	1.44	12	.875	23.25	6.14	10.82	23.75



- NOTES:
- VALVES ARE MANUFACTURED IN ACCORDANCE WITH ANSI/AWWA C517-05, 'RESILIENT-SEATED CAST IRON ECCENTRIC PLUG VALVES.'
  - VALVES ARE RATED AT 150 PSI CWP AND APPLICABLE FOR SERVICE TEMPERATURES FROM 33° THROUGH 150°F.
  - END FLANGE DIMENSIONS AND DRILLING ARE IN ACCORDANCE WITH AWWA C111/A21.11 'RUBBER GASKETED JOINTS FOR DUCTILE-IRON PRESSURE PIPE AND FITTINGS'
  - VALVES ARE TESTED IN ACCORDANCE WITH ANSI/AWWA C517-05, AS FOLLOWS:  
LEAKAGE TEST:  
DIRECT PRESSURE: 150 PSI FOR 30 SEC, MINIMUM  
HYDROSTATIC TEST: 225 PSI FOR 60 SEC, MINIMUM
  - PAINT: BLUE - SEMI-GLOSS METAL PRIMER
  - VALVE SEATS ARE NICKEL.
  - ELASTOMERS AVAILABLE IN NITRILE, EPDM, NEOPRENE



18	CAPSCREW	STEEL, ZINC PLATED
17	GEAR W/ 2"NUT	BURIED SERVICE
16	KEY	STEEL
15	CAPSCREW	STEEL, ZINC PLATED
14	COVER PLATE	A126 CLB
13	CAPSCREW	STEEL, ZINC PLATED
12	SEAL	SEE NOTE 7
11	CAPSCREW	STEEL, ZINC PLATED
10	SEAL	SEE NOTE 7
9	HEX NUT	STEEL, ZINC PLATED
8	STUD	STEEL, ZINC PLATED
7	PACKING GLAND	A126 CLB
6	PACKING	V-RING, SEE NOTE 7
5	THRUST BEARING	PTFE
4	BEARING	SELF-LUBRICATED
3	CAP	A126 CLB
2	PLUG	A536 65-45-12/NOTE 7
1	BODY	A126 CLB/NICKEL OVERLAY
NO.	PART NAME	MATERIAL

PARTS LIST				
HOMESTEAD VALVES				
A DIVISION OF OLSON TECHNOLOGIES, INC.				
160 WALNUT ST. ALLENTOWN, PA. 18102 (610) 770-1100				
REV	ISSUE	BY	APPR	DATE
C	S1226	RH		5/3/10
B	S1105	RH	DED	4/1/09
A	S867	RH	DED	1/19/07
TITLE				NUMBER
14"-18" E127 - BURIED ECCENTRIC PLUG VALVE				SK-4069