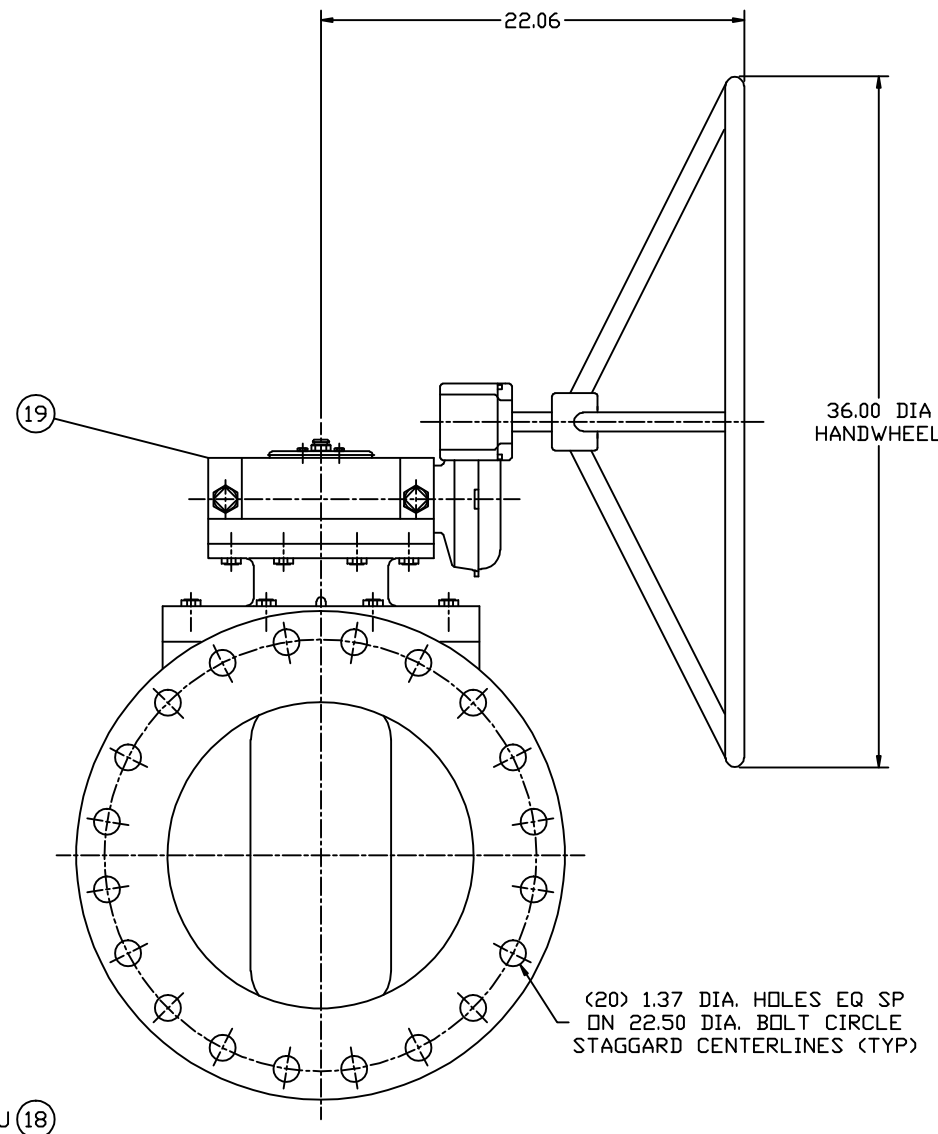
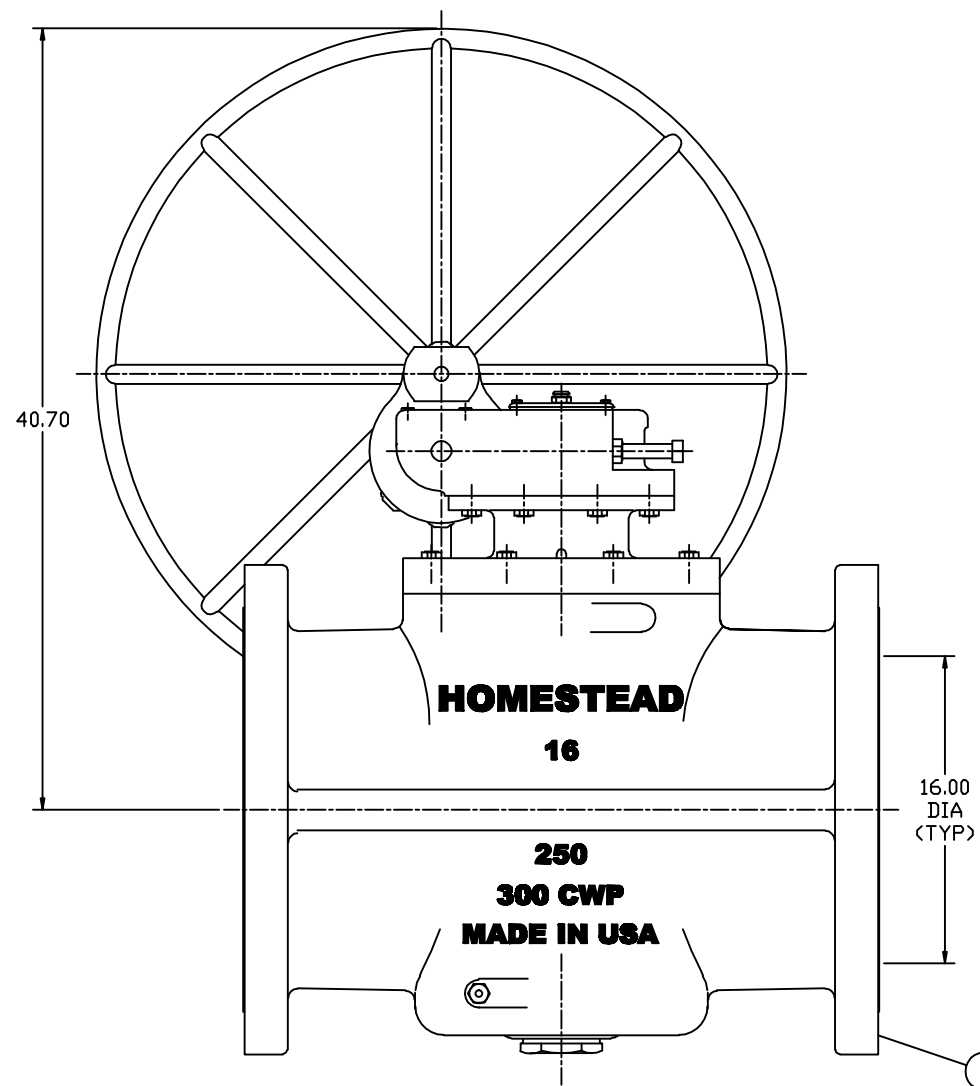
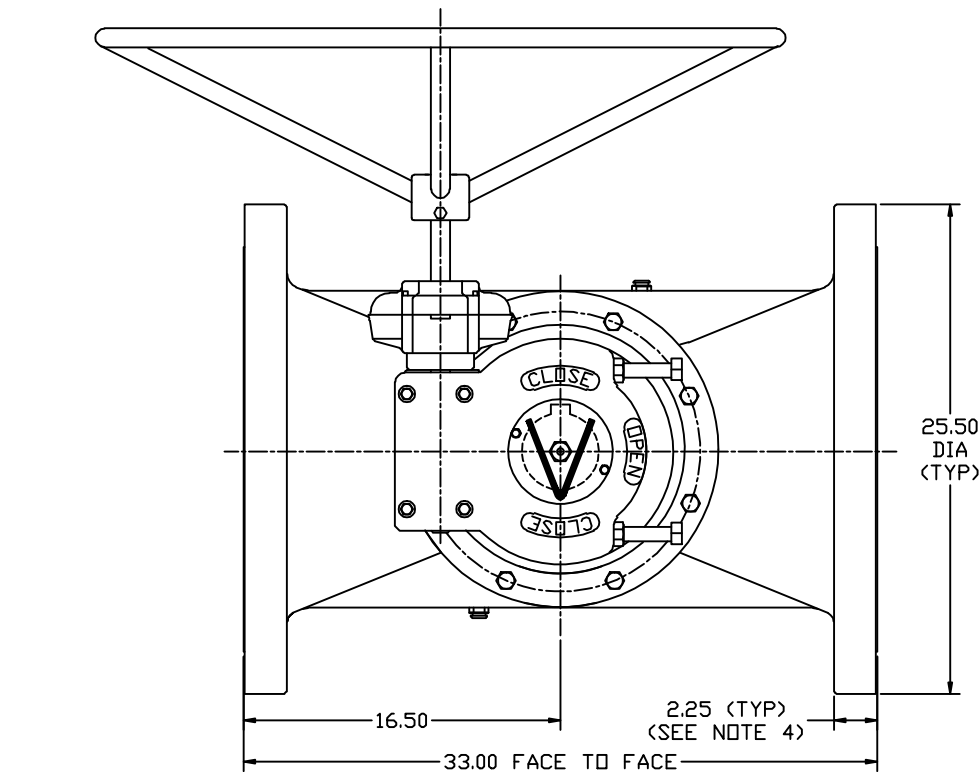


ANSI CLASS 250, LUBRICATED PLUG VALVE

GENERAL SPECIFICATIONS:

1. FACE-TO-FACE LENGTH CONFORMS TO ANSI B16.10 FACE-TO-FACE AND END-TO-END DIMENSIONS OF VALVES, CLASS 250 CAST IRON PLUG VALVES, VENTURI PATTERN.
2. FLANGES CONFORM TO ANSI B16.1 CAST IRON PIPE FLANGES AND FLANGE FITTINGS, CLASS 250.
3. FIG 712G1 VALVES HAVE GEARS SIZED FOR APPLICATIONS UP TO 250 PSI.
4. FACE TO FACE INCLUDES A .062 RAISED FACE ON BOTH ENDS.



19	GEAR w/HANDWHEEL	COMMERCIAL
18	KEY	STEEL
17	CAPSCREW	STEEL
16	SEALANT	650S
15	LUBE FITTING	STEEL
14	LUBE SCREW	STEEL
13	CHECK VALVE	STEEL
12	O-RING	VITON
11	GASKET	COPPER
10	DISC	PTFE
9	DISC	STEEL
8	SPRING	STEEL
7	HEADSEAL	PTFE
6	GASKET	FIB BOND w/RUB NITRILE
5	CAPSCREW	STEEL
4	ADAPT-O-CAP	A536 65-45-12
3	BONNET	A536 65-45-12
2	PLUG	A126 CL B
1	BODY	A536 65-45-12
NO.	PART NAME	MATERIAL

PARTS LIST

<b>HOMESTEAD VALVES</b>			
A DIVISION OF OLSON TECHNOLOGIES, INC.			
160 WALNUT ST. ALLENTOWN, PA. 18102 (610) 770-1100			
			TITLE
			16" FIG 712G1
			LUBRICATED PLUG VALVE
			NUMBER
			SK-2003
C	S1855	ND	9/27/19
B	R296	HCS TRS	5/98
A	R253	HCS TRS	2/98
REV	ISSUE	BY	APPR DATE