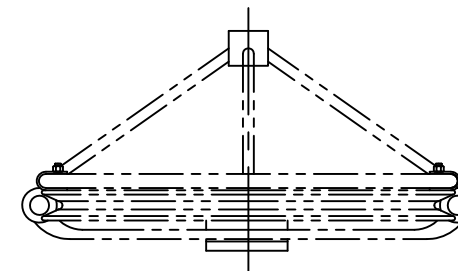
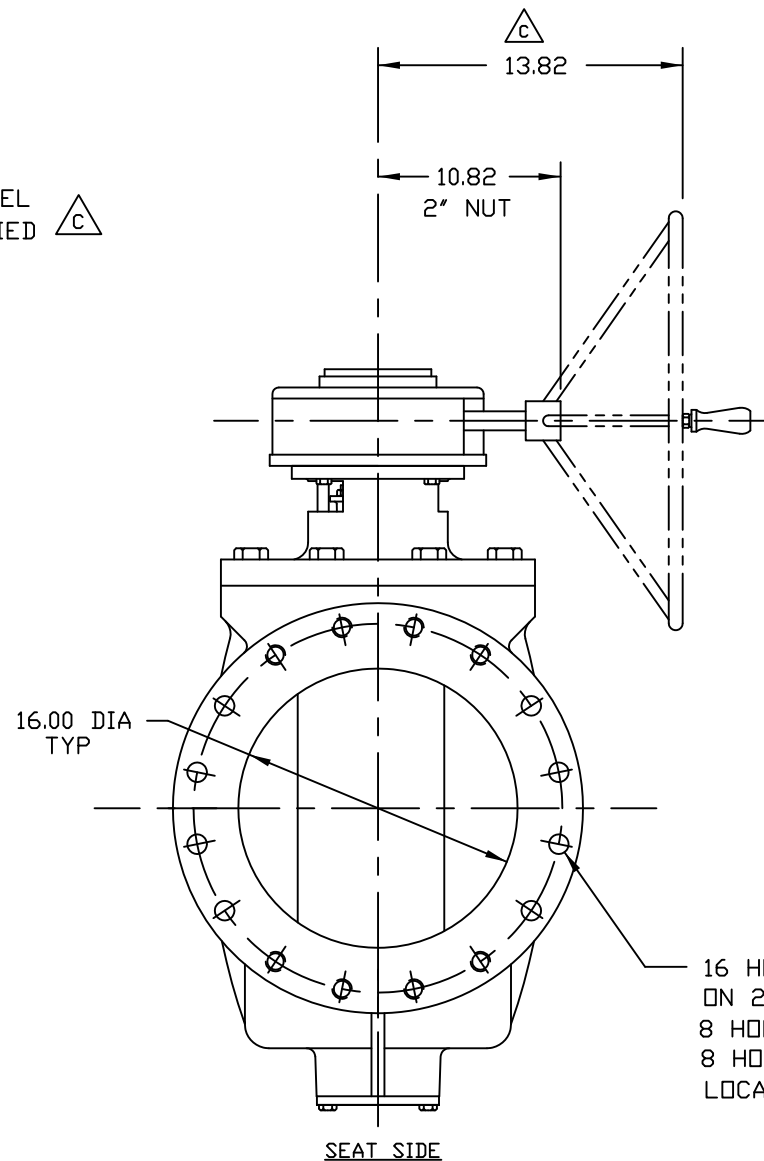
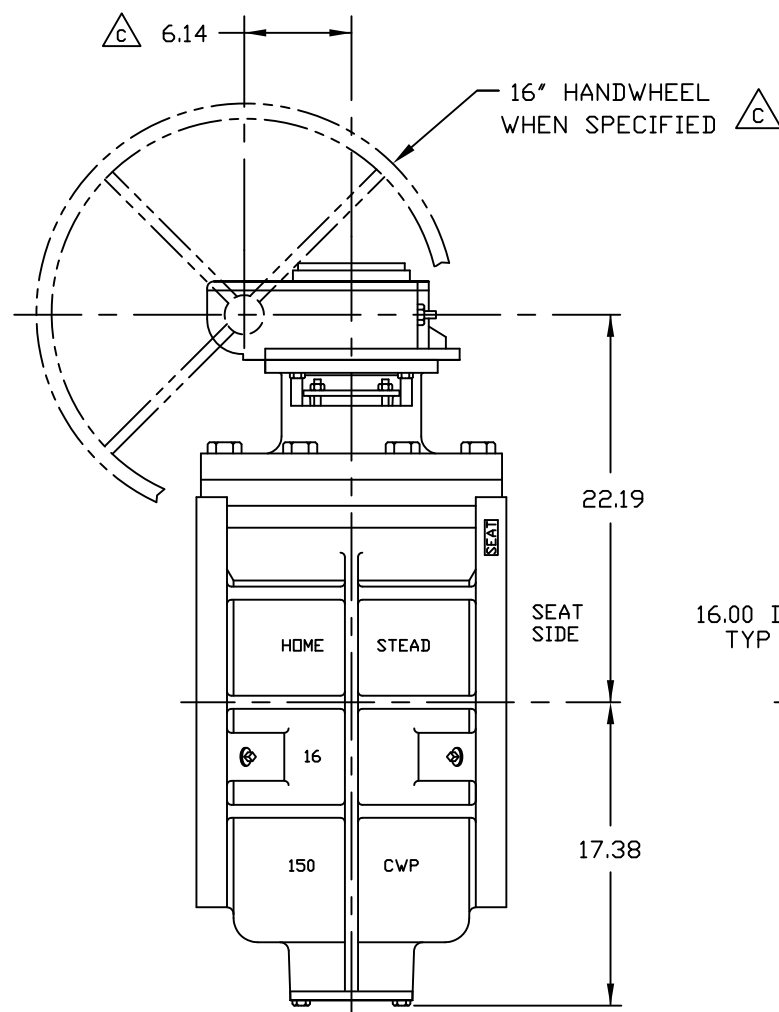


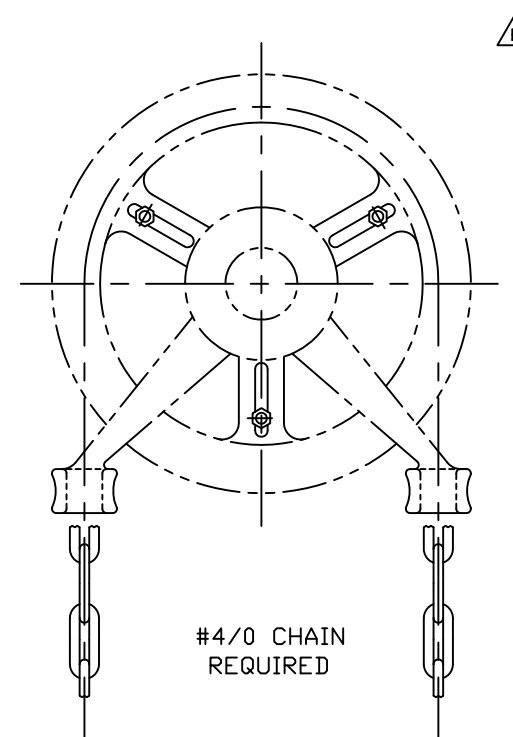
PLUG POSITIONS  
VIEWED FROM TOP



CHAINWHEEL  
(WHEN SPECIFIED)  
SHIPPED SEPARATELY



16 HOLES EQ. SP. TO STRADDLE  $\phi$   
ON 21.250" DIA B.C.  
8 HOLES - 1.125" DIA DRILL THRU  
8 HOLES - 1.000"-8 UNC-2B TAP x 1.18" DEEP  
LOCATED AS SHOWN (TYP EACH FLANGE)



F

NOTES:

- VALVES ARE MANUFACTURED IN ACCORDANCE WITH ANSI/AWWA C517, "RESILIENT-SEATED CAST IRON ECCENTRIC PLUG VALVES." LATEST REVISION.
- END FLANGE DIMENSIONS AND DRILLING ARE IN ACCORDANCE WITH ASME/ANSI B16.1, CLASS 125 FOR CAST IRON PIPE FLANGES AND FLANGE FITTINGS.
- PAINT: BLUE - SEMI-GLOSS METAL PRIMER
- WEIGHTS: VALVE - 926 LBS GEAR - 96 LBS
- ELASTOMERS AVAILABLE: BUNA-N  
EPDM  
NEOPRENE  
VITON

F

21	CHAINWHEEL ASSY.	WHEN SPECIFIED
20	GEAR	COMMERCIAL
19	KEY	STEEL
18	PIPE PLUG	A126 CLB
17	CAPSCREW	STEEL, ZINC PLATED
16	GASKET	NITRILE
15	BOTTOM PLATE	A126 CLB
14	CAPSCREW	STEEL, ZINC PLATED
13	SEAL	SEE NOTE 5
12	CAPSCREW	STEEL, ZINC PLATED
11	SEAL	SEE NOTE 5
10	HEX NUT	STEEL, ZINC PLATED
9	STUD	STEEL, ZINC PLATED
8	PACKING GLAND	A126 CLB
7	PACKING	V-RING, SEE NOTE 5
6	THRUST BEARING	PTFE
5	RADIAL BEARING	PERM. LUBRICATED 316SS
4	CAPSCREW	STEEL, ZINC PLATED
3	MTG BRACKET	A126 CLB
2	PLUG	A536 65-45-12/NOTE 5
1	BODY	A126 CLB/NICKEL SEAT
NO.	PART NAME	MATERIAL

PARTS LIST

HOMESTEAD<sup>®</sup> VALVES  
A DIVISION OF OLSON TECHNOLOGIES, INC.  
160 WALNUT ST. ALLENTOWN, PA. 18102 (610) 770-1100  
WWW.HOMESTEADVALVE.COM

F	S1600	RH		8/8/16	TITLE
E	S1298	RH	DED	1/19/11	16" E126 - GEAR OPERATED ECCENTRIC PLUG VALVE
D	S1236	RH	DED	5/7/10	
C	S1227	TC	DED	03/29/10	NUMBER
REV	ISSUE	BY	APPR	DATE	SK-4056