

SEE NOTE 3

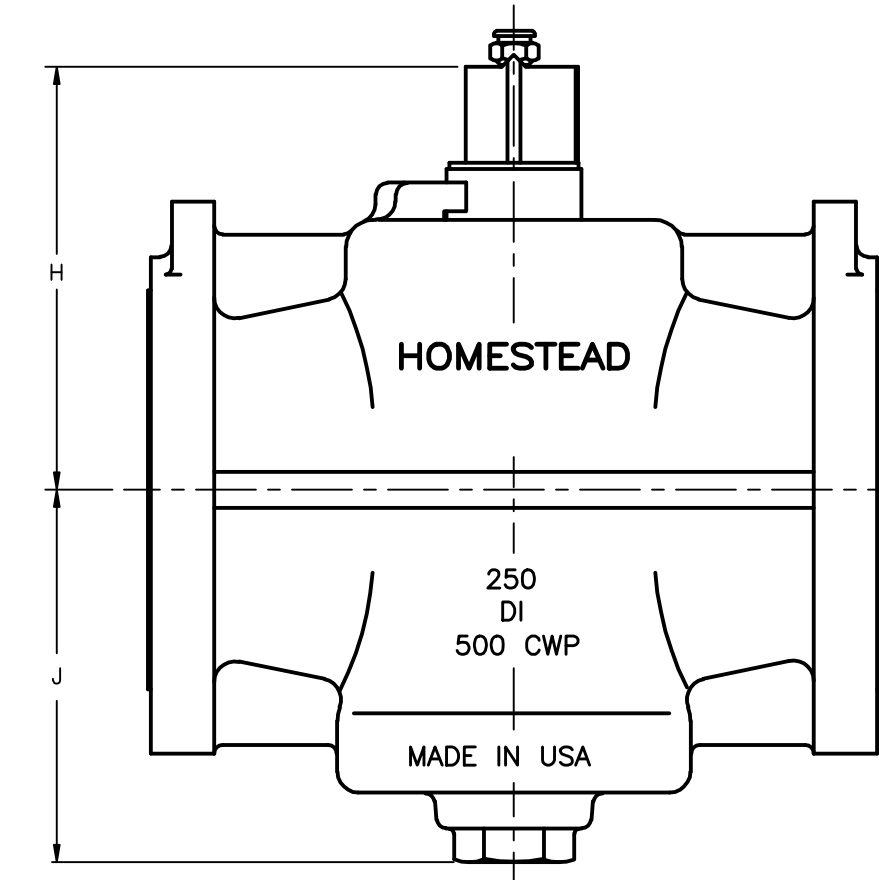
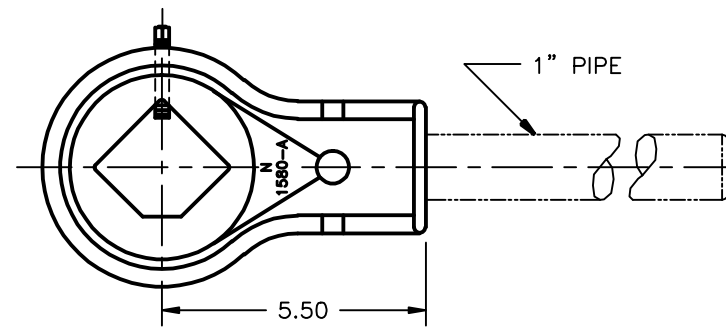


TABLE OF DIMENSIONS														
VALVE SIZE	PART NO.	CWP	A	B	C	D	E	F	G	H	I	J	K	WRENCH
2.5	0702005024	500	2.5	7.50	1.00	9.50	8	.88	5.88	5.53	1.22	4.18	4.75	E
3	0702001030	500	3	8.25	1.13	11.12	8	.88	6.62	6.52	1.50	5.22	5.56	L
4	0702005040	500	4	10.00	1.25	12.00	8	.88	7.88	7.80	2.00	6.08	6.00	N
5	0702005050	500	5	11.00	1.38	15.25	8	.88	9.25	8.69	2.00	7.06	7.62	N

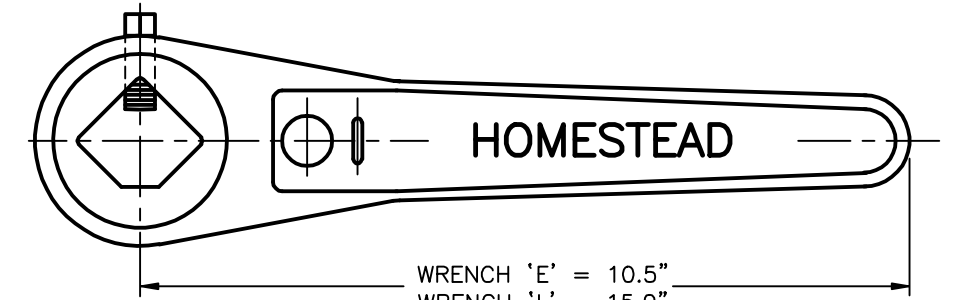


'N' WRENCH SOLD SEPARATELY WITHOUT PIPE HANDLE

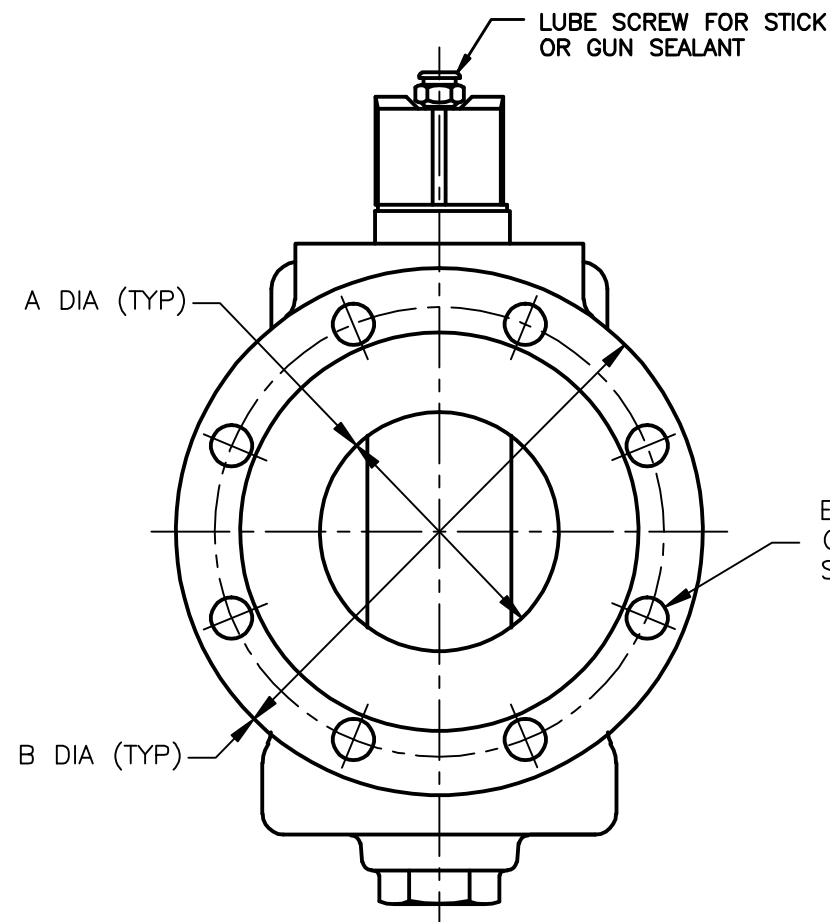
ANSI CLASS 250, LUBRICATED PLUG VALVE

GENERAL SPECIFICATIONS:

- FACE-TO-FACE LENGTHS CONFORM TO ANSI B16.10 FACE-TO-FACE AND END-TO-END DIMENSIONS CLASS 250 CAST IRON PLUG VALVES, REGULAR PATTERN.
- FLANGES CONFORM TO ANSI B16.1 "CAST IRON PIPE FLANGES AND FLANGE FITTINGS", CLASS 250.
- FACE-TO-FACE INCLUDES .06" RAISED FACES.
- FOR FLAMMABLE FLUID OR GAS APPLICATIONS, THE MAXIMUM OPERATING PRESSURE IS 125 PSI.



WRENCH SOLD SEPARATELY



11	SEALANT	AS REQUIRED
10	LUBE SCREW	STEEL
9	CHECK VALVE	STEEL
8	O-RING	VITON
7	HEAD SEAL	PTFE
6	DISC	PTFE
5	DISC	STEEL
4	SPRING	STEEL
3	BONNET	A536 65-45-12
2	PLUG	A126 CLASS B
1	BODY	A536 65-45-12
NO.	PART NAME	MATERIAL

PARTS LIST

HOMESTEAD VALVES
 A DIVISION OF OLSON TECHNOLOGIES, INC.
 160 WALNUT ST. ALLENTOWN, PA. 18102 (610) 770-1100

REV	ISSUE	BY	APPR	DATE	TITLE	NUMBER
C	S2067	ND		9/21/21	2.5" - 5" FIG 702 LUBRICATED PLUG VALVES	SK-2018
B	S1852	RAH	DM	11/3/15		
A	R296	HCS	TRS	5/98		