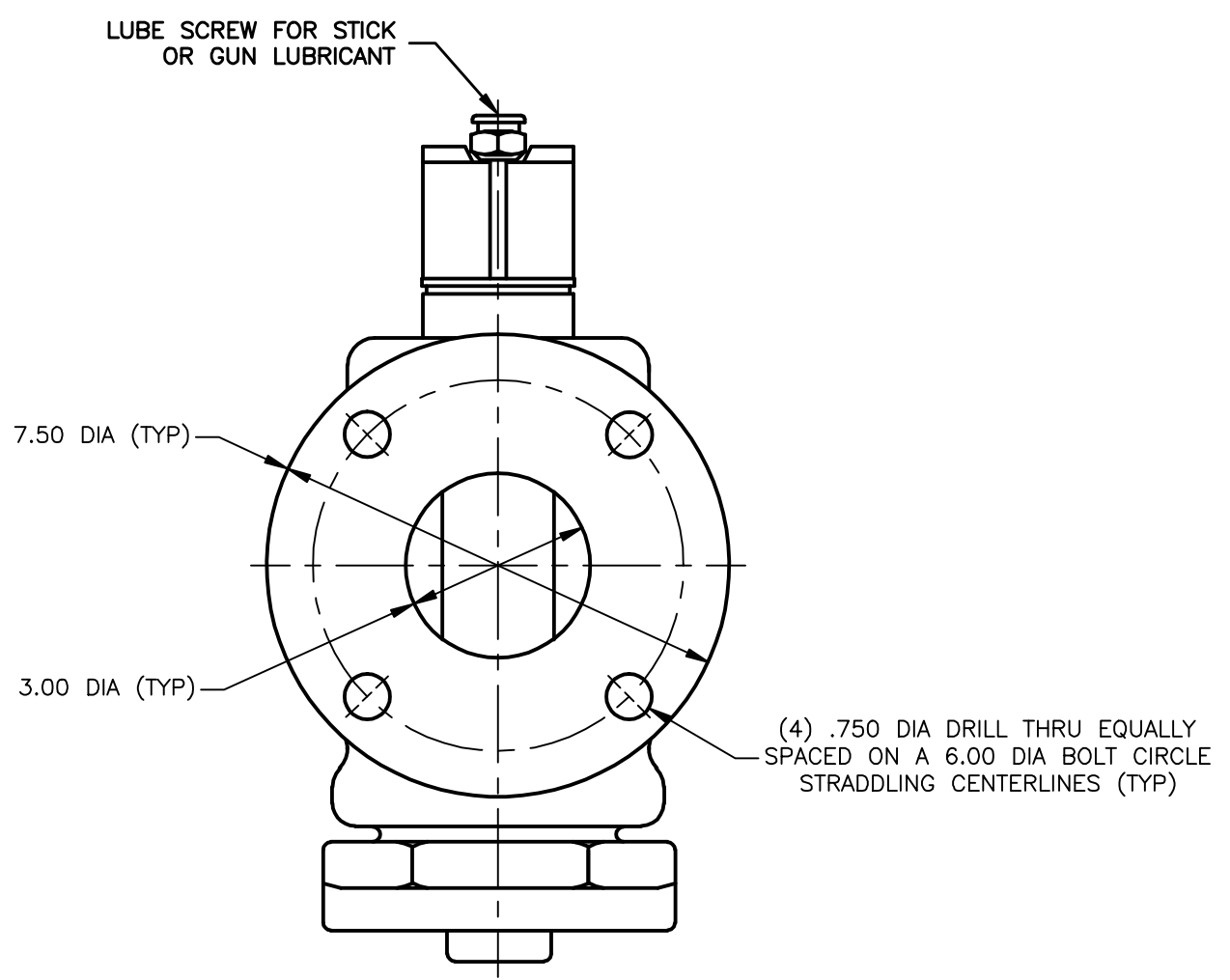
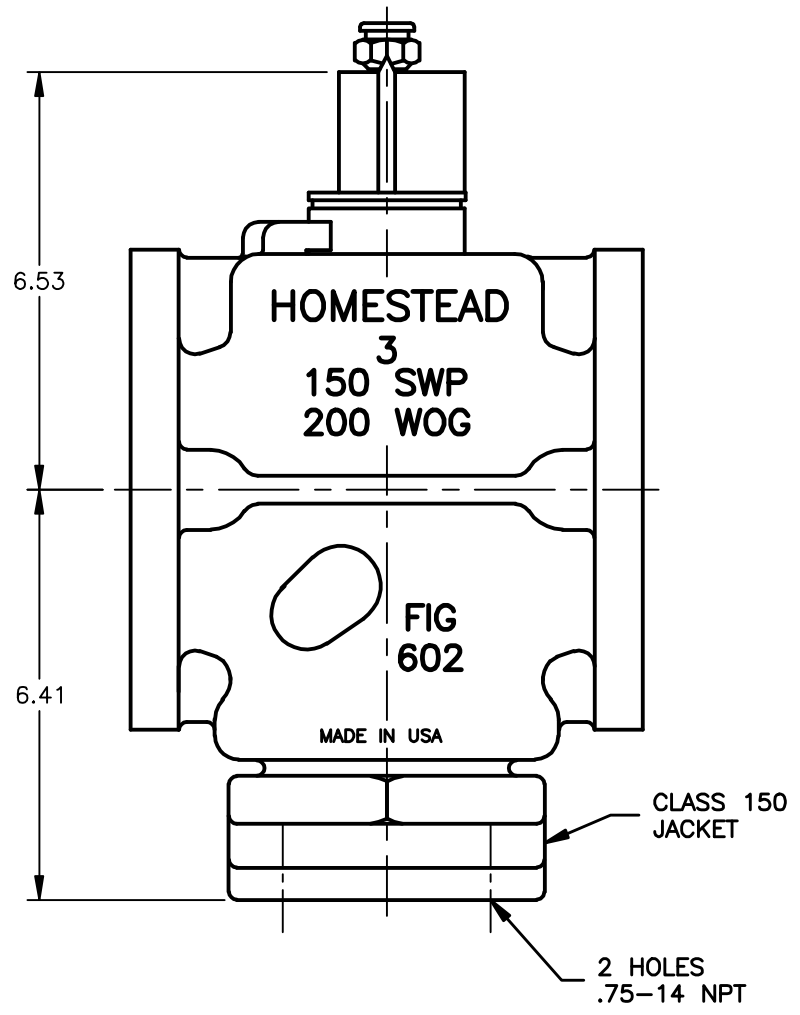
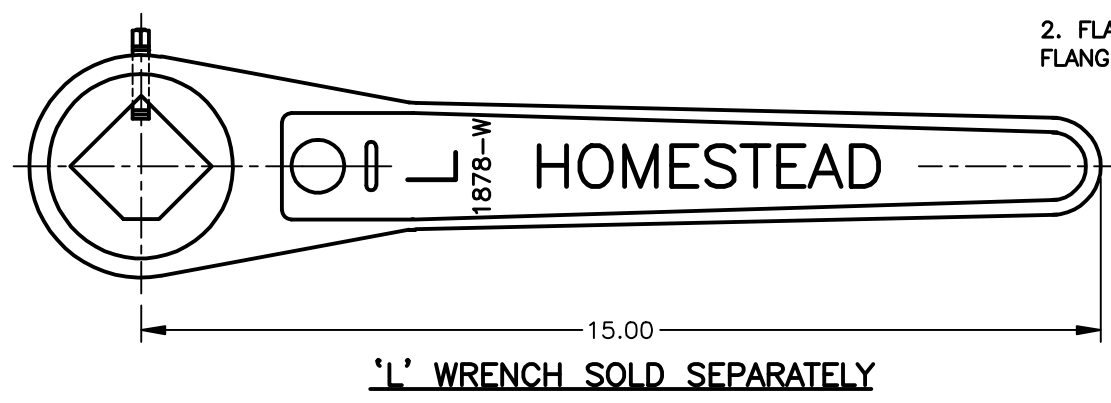
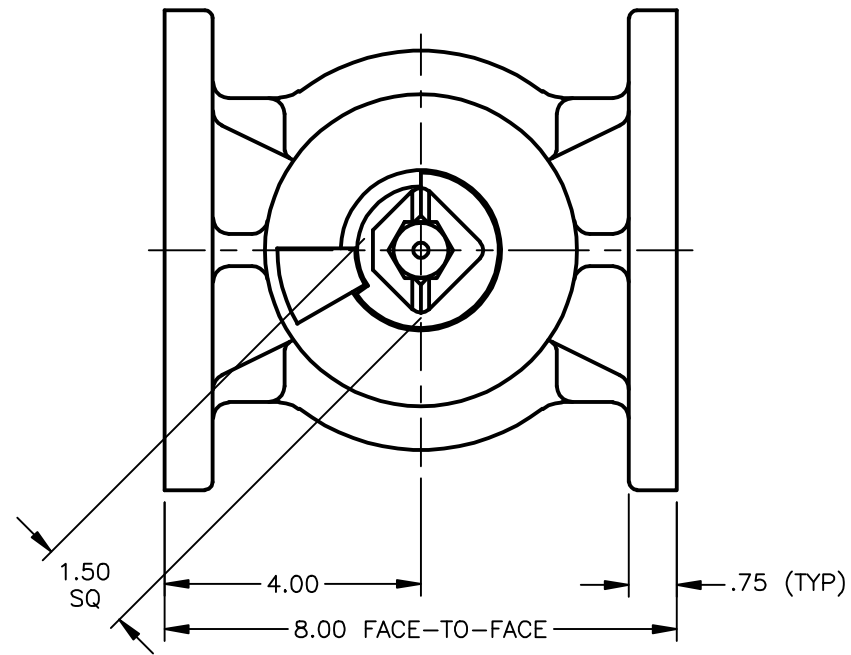


ANSI CLASS 125, CAST IRON LUBRICATED PLUG VALVE

GENERAL SPECIFICATIONS:

1. FACE-TO-FACE LENGTH CONFORMS TO ANSI B16.10 'FACE-TO-FACE AND END-TO-END DIMENSIONS OF VALVES', CLASS 125 CAST IRON PLUG VALVES, SHORT PATTERN.
2. FLANGES CONFORM TO ANSI B16.1 'CAST IRON PIPE FLANGES AND FLANGE FITTINGS', CLASS 125.



NO.	PART NAME	MATERIAL
11	SEALANT	750S
10	LUBE SCREW	STEEL
9	CHECK VALVE	STEEL
8	O-RING	VITON
7	HEAD SEAL	PEEK
6	DISC	PTFE
5	DISC	STEEL
4	SPRING	STEEL
3	JACKET	A536 65-45-12
2	PLUG	A126 CL B
1	BODY	A126 CL B

PARTS LIST
HOMESTEAD® VALVES
 A DIVISION OF OLSON TECHNOLOGIES, INC.
 160 WALNUT ST. ALLENTOWN, PA. 18102 (610) 770-1100

REV	ISSUE	BY	APPR	DATE	NUMBER	TITLE
F	S2074	ND		11/10/21		3" FIGURE 602SJ LUBRICATED PLUG VALVES
E	S1838	ND	DM	7/09/19		
D	S1708	TC	DM	10/19/18		
C	S1292	TC	DED	12/01/10		
B	S738	RAH	DED	11/18/06		

SK-2057