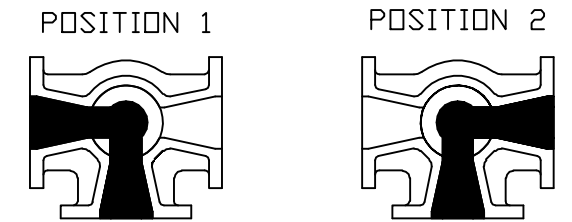
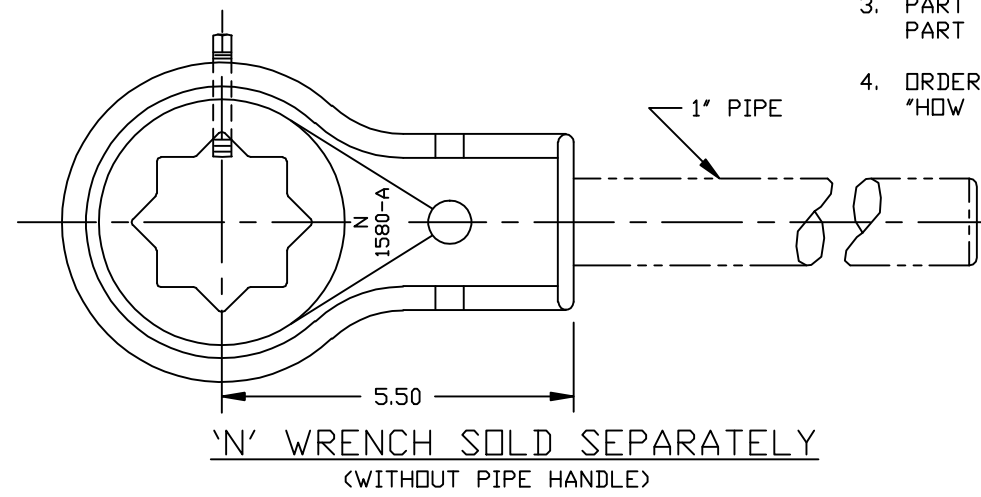
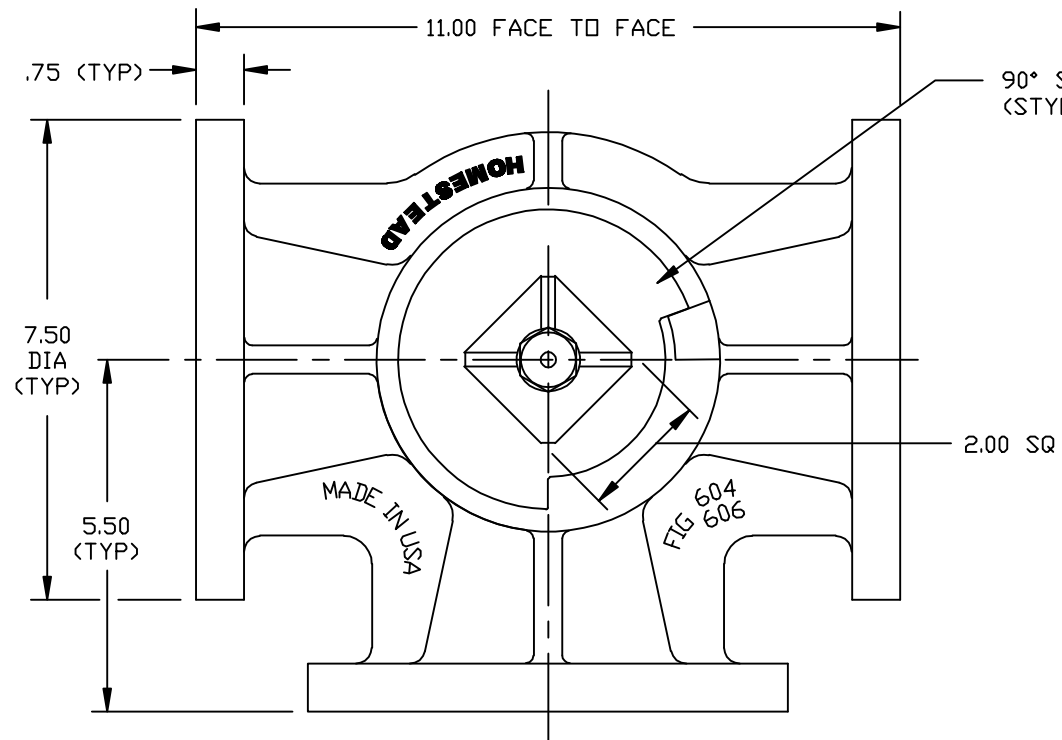


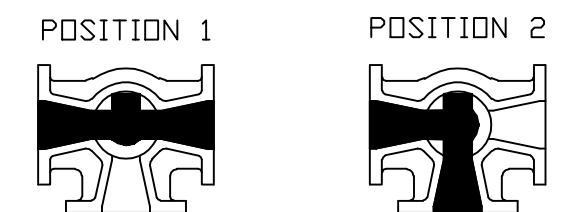
ANSI CLASS 125, CAST IRON LUBRICATED PLUG VALVE

GENERAL SPECIFICATIONS:

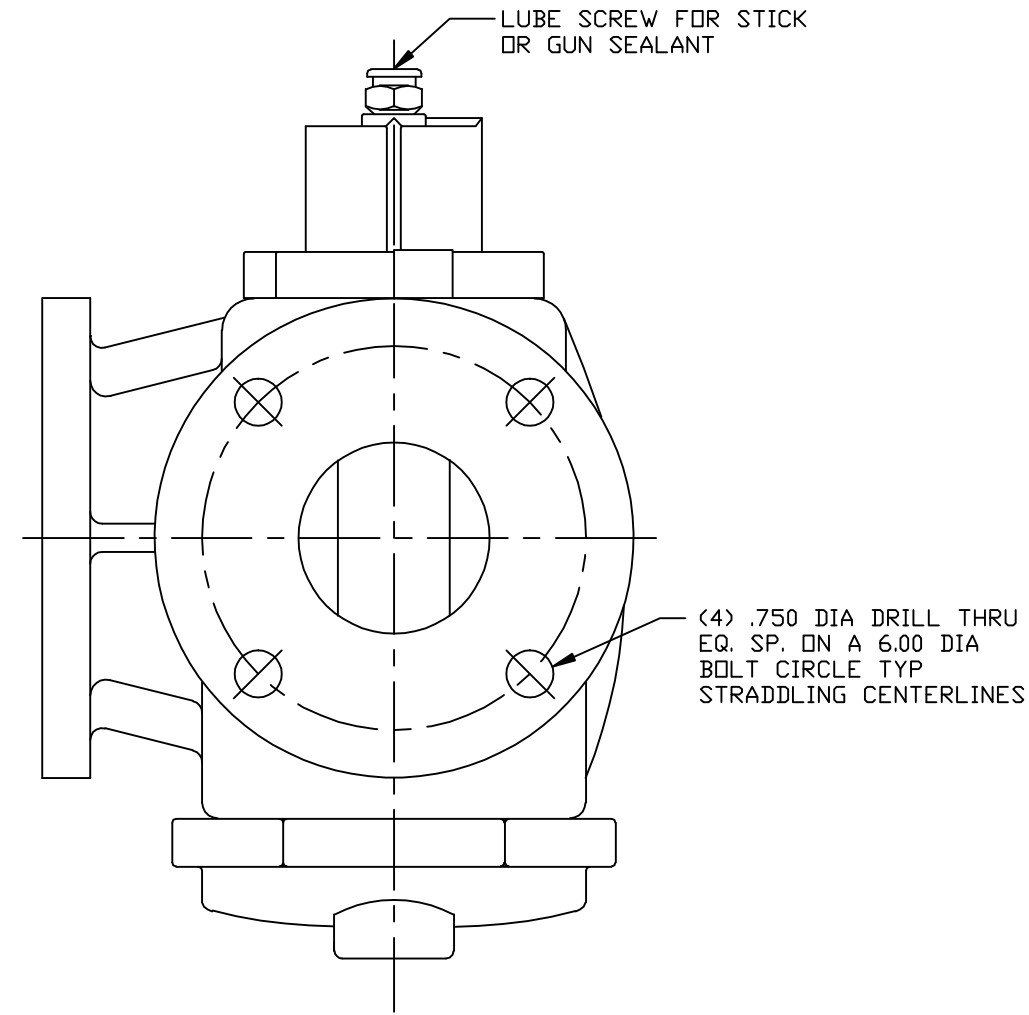
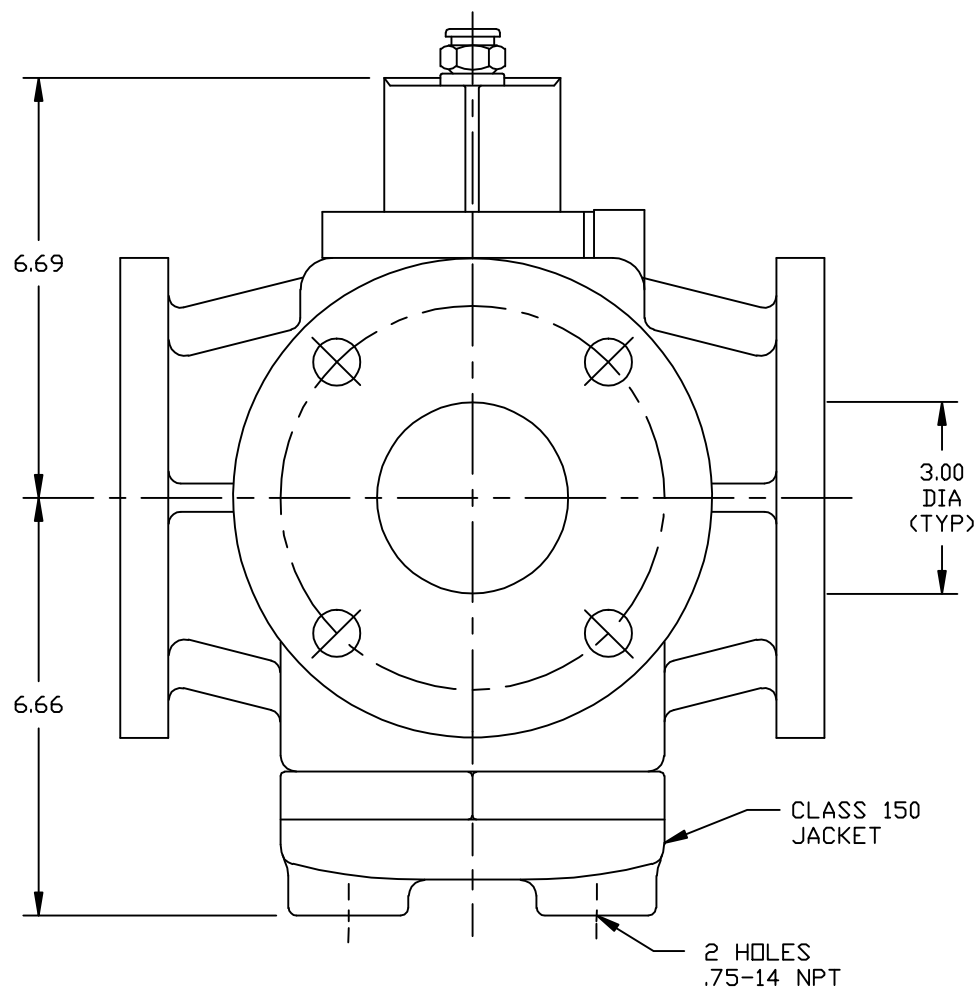
1. FLANGES CONFORM TO ANSI B16.1 'CAST IRON PIPE FLANGES AND FLANGE FITTINGS', CLASS 125.
2. WRENCH SOLD SEPARATELY.
3. PART NUMBER 0604401030 (3-WAY, 2-PORT) INCLUDES A STOP RING
PART NUMBER 0606401030 (3-WAY, 3-PORT) INCLUDES A STOP RING
4. ORDER SHALL INDICATE STYLE. SEE SK-2029 FOR 'HOW TO ORDER' INSTRUCTIONS.



3-WAY, 2-PORT, 90° TURN
FIG 604 STYLE A EXAMPLE



3-WAY, 3-PORT, 90° TURN
FIG 606 STYLE F EXAMPLE



12	SEALANT	750S
11	STOP-RING	A126 CL B
10	LUBE SCREW	STEEL
9	CHECK VALVE	STEEL
8	O RING	VITON
7	HEAD SEAL	PEEK
6	DISC	PTFE
5	DISC	STEEL
4	SPRING	STEEL
3	JACKET	A536 65-45-12
2	PLUG	A126 CL B
1	BODY	A126 CL B
NO.	PART NAME	MATERIAL

PARTS LIST
HOMESTEAD VALVES
 A DIVISION OF OLSON TECHNOLOGIES, INC.
 160 WALNUT ST. ALLENTOWN, PA. 18102 (610) 770-1100

REV	ISSUE	BY	APPR	DATE	TITLE
D	S1838	ND		7/09/19	3" FIGURE 604SJ/606SJ LUBRICATED PLUG VALVE
C	S1730	RAH	DM	6/8/17	
B	R349	HCS	TRS	9/98	
A	R330	HCS	TRS	8/98	
					NUMBER
					SK-2031