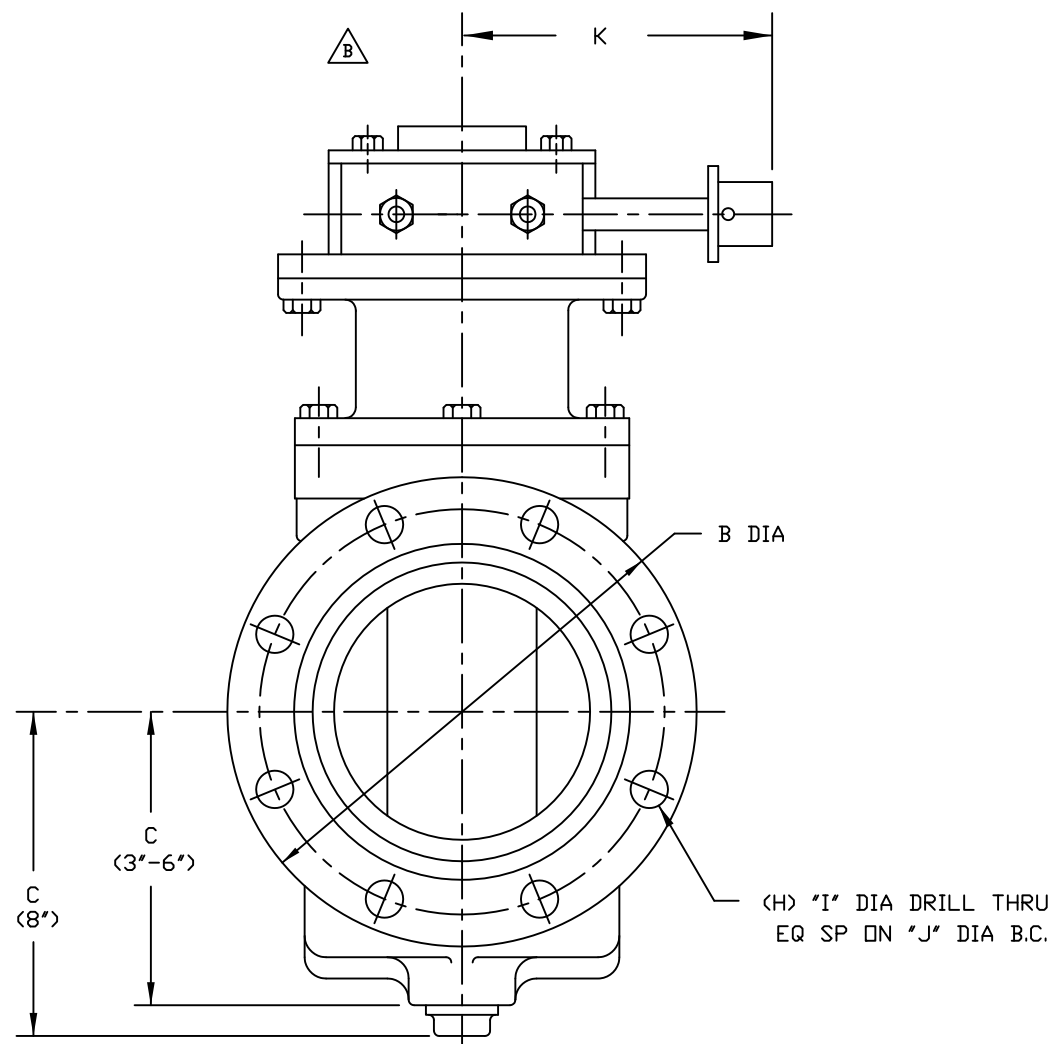
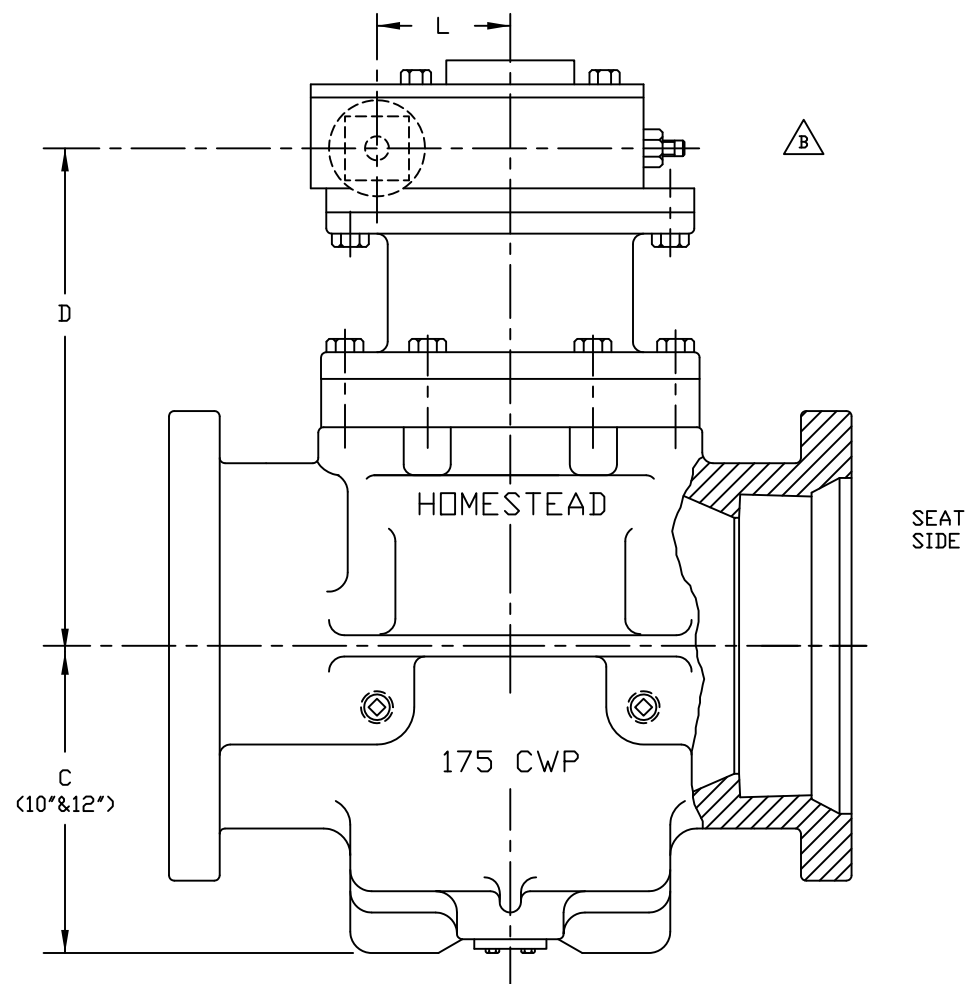


TABLE OF DIMENSIONS (INCHES)

VALVE SIZE	B	C	D	E	F	G	H	I	J	K	L	WGT
3.00	7.69	4.28	7.16	11.50	5.75	0.94	4	.750	6.19	6.75	2.76	59
4.00	9.13	5.18	7.94	14.25	7.12	1.00	4	.875	7.50	6.75	2.76	80
6.00	11.13	6.88	11.62	15.75	7.88	1.06	6	.875	9.50	6.75	2.76	155
8.00	13.38	9.14	13.50	17.38	8.69	1.13	6	.875	11.75	7.25	3.54	251
10.00	15.69	10.50	16.88	19.38	9.69	1.19	8	.875	14.00	7.25	3.54	365
12.00	17.94	14.12	19.38	20.75	10.38	1.25	8	.875	16.25	7.25	3.54	590

NOTES:

- VALVES ARE MANUFACTURED IN ACCORDANCE WITH ANSI/AWWA C517-05, "RESILIENT-SEATED CAST IRON ECCENTRIC PLUG VALVES."
- END FLANGE DIMENSIONS AND DRILLING ARE IN ACCORDANCE WITH AWWA C111/A21.11 "RUBBER GASKETED JOINTS FOR DUCTILE-IRON PRESSURE PIPE AND FITTINGS."
- PAINT: BLACK - SEMI-GLOSS METAL PRIMER
- ELASTOMERS AVAILABLE: BUNA-N  
EPDM  
NEOPRENE  
VITON



21	PIPE PLUG	A126 CLB
20	GEAR w/ 2"NUT	COMMERCIAL
19	KEY	STEEL
18	CAP SCREW	STEEL, ZINC PLATED
17	MTG BRACKET	A126 CLB
16	BONNET SEAL (10"x12")	SEE NOTE 4
15	BONNET PLATE (10"x12")	A126 CLB
14	BONNET (8")	A126 CLB
13	SEAL	SEE NOTE 4
12	NUT	STEEL, ZINC PLATED
11	STUD	STEEL, ZINC PLATED
10	PACKING GLAND	A126 CLB
9	PACKING	V-RING, SEE NOTE 4
8	RADIAL BEARING	PERM. LUBRICATED 316SS
7	THRUST BEARING	PTFE
6	THRUST BEARING	PTFE
5	RADIAL BEARING	PERM. LUBRICATED 316SS
4	CAP SCREW	STEEL, ZINC PLATED
3	COVER PLATE (6")	A126 CLB
2	PLUG 10",12"	A536 65-45-12/NOTE 4
	PLUG 3",4",6",8"	A126 CLB/SEE NOTE 4
1	BODY	A126 CLB/NICKEL SEAT
NO.	PART NAME	MATERIAL

PARTS LIST

HOMESTEAD® VALVES  
A DIVISION OF OLSON TECHNOLOGIES, INC.  
160 WALNUT ST. ALLENTOWN, PA. 18102 (610) 770-1100

REV	ISSUE	BY	APPR	DATE	TITLE
C	S1600	RH		12/13/14	3"-12" E127 MJ - BURIED
B	S1236	RH	DED	11/18/10	ECC PLUG VALVE w/ GEAR
A	S1047	RH	DED	10/19/08	NUMBER
					SK-4070