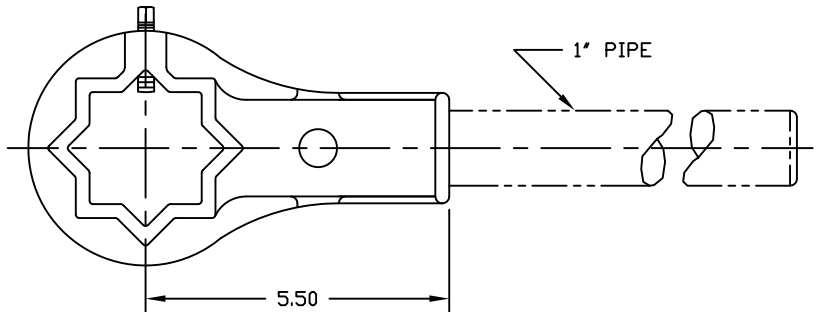
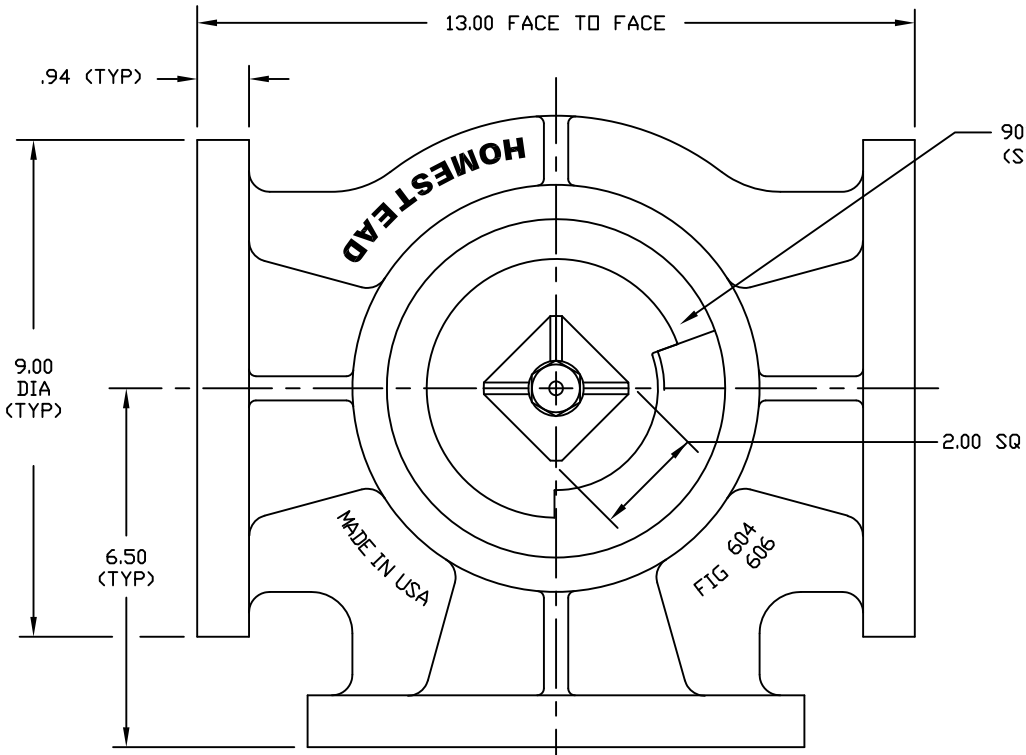


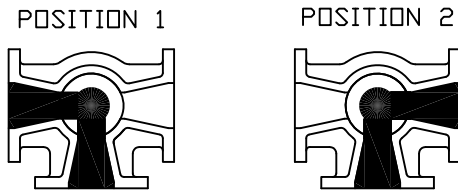
ANSI CLASS 125, CAST IRON LUBRICATED PLUG VALVE

GENERAL SPECIFICATIONS:

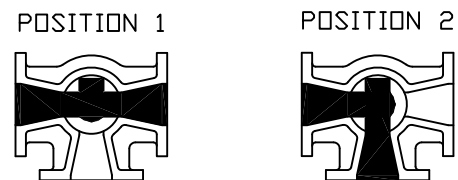
1. FLANGES CONFORM TO ANSI B16.1 'CAST IRON PIPE FLANGES AND FLANGE FITTINGS', CLASS 125.
2. WRENCH SOLD SEPARATELY.
3. PART NUMBER 0604401040 (3-WAY, 2-PORT) INCLUDES A STOP RING
PART NUMBER 0606401040 (3-WAY, 3-PORT) INCLUDES A STOP RING
4. ORDER SHALL INDICATE STYLE. SEE SK-2029 FOR 'HOW TO ORDER' INSTRUCTIONS.



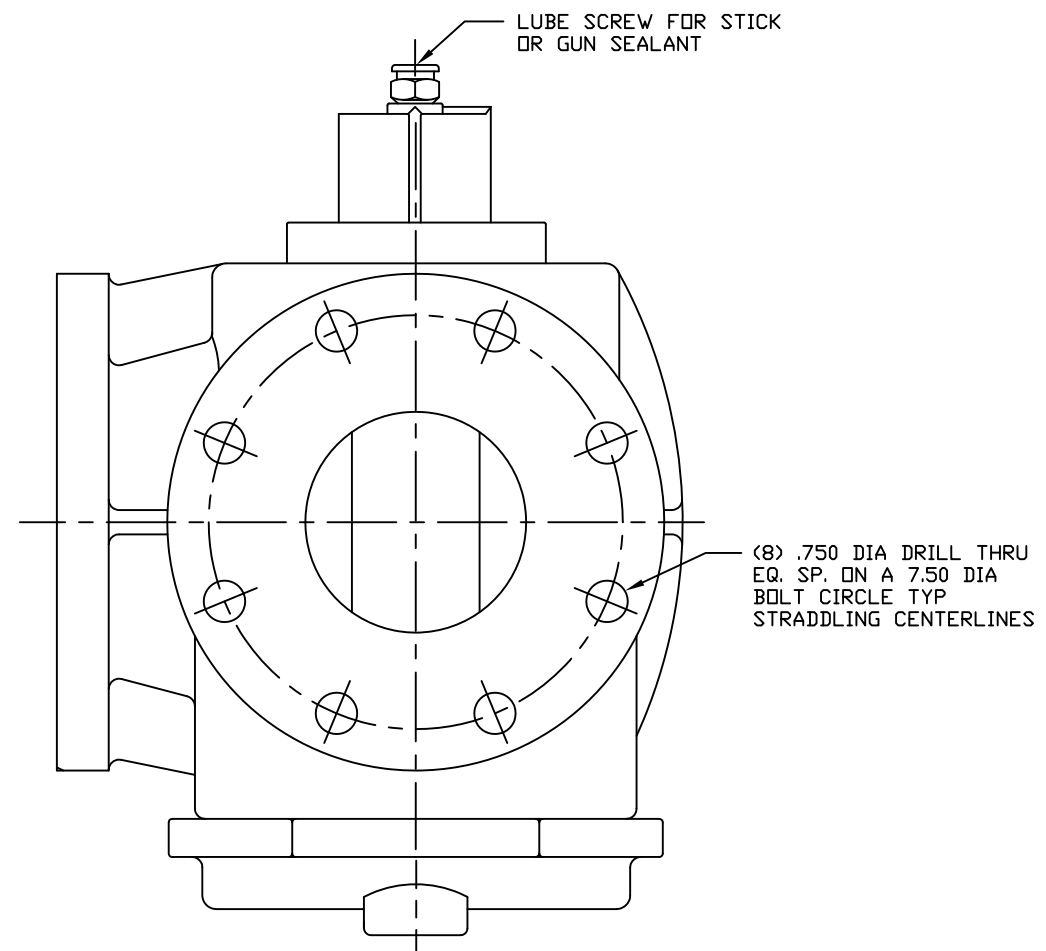
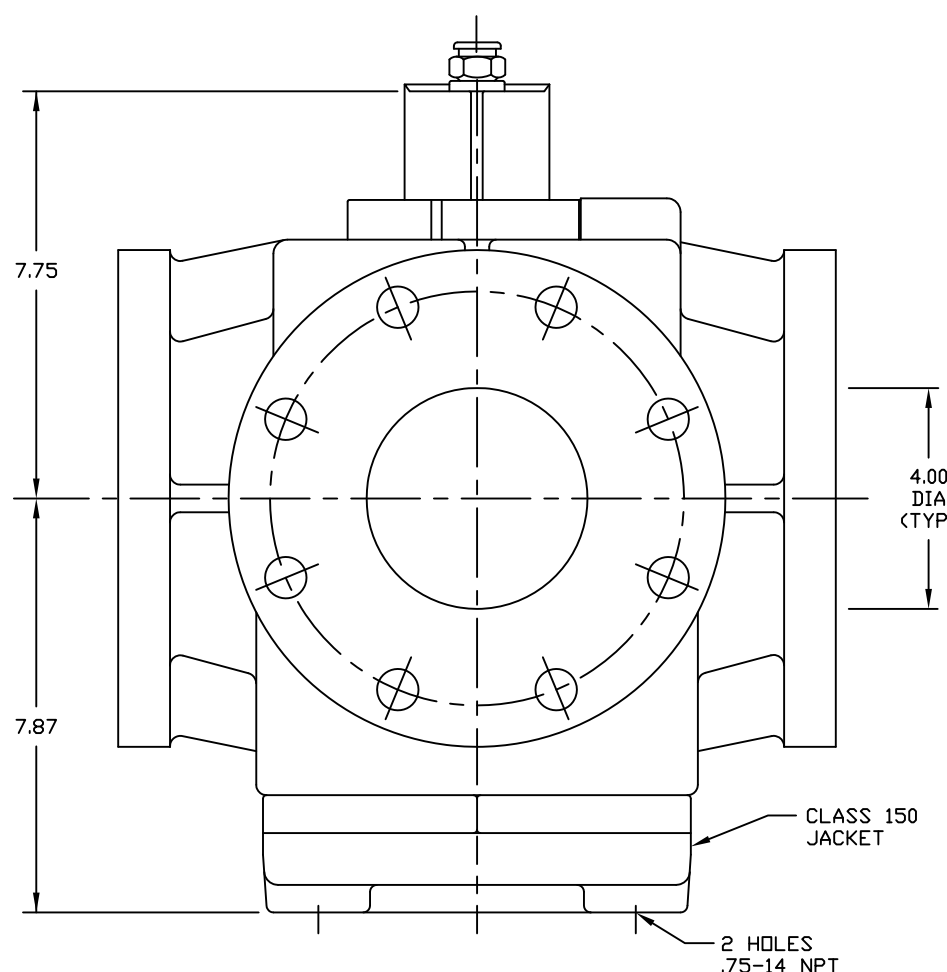
'N' WRENCH SOLD SEPARATELY
(WITHOUT PIPE HANDLE)



3-WAY, 2-PORT, 90° TURN
FIG 604 STYLE A EXAMPLE



3-WAY, 3-PORT, 90° TURN
FIG 606 STYLE F EXAMPLE



12	SEALANT	750S
11	STOP-RING	A126 CL B
10	LUBE SCREW	STEEL
9	CHECK VALVE	STEEL
8	O RING	VITON
7	HEAD SEAL	PEEK
6	DISC	PTFE
5	DISC	STEEL
4	SPRING	STEEL
3	JACKET	A536 65-45-12
2	PLUG	A126 CL B
1	BODY	A126 CL B
NO.	PART NAME	MATERIAL

PARTS LIST				
HOMESTEAD VALVES				
A DIVISION OF OLSON TECHNOLOGIES, INC.				
160 WALNUT ST. ALLENTOWN, PA. 18102 (610) 770-1100				
REV				TITLE
C	S1838	ND	7/09/19	4" FIGURE 604SJ/606SJ LUBRICATED PLUG VALVE
B	S1583	RAH DM	4/14/14	
A	R333	HCS TRS	9/8/98	
REV	ISSUE	BY	APPR	DATE
				SK-2033