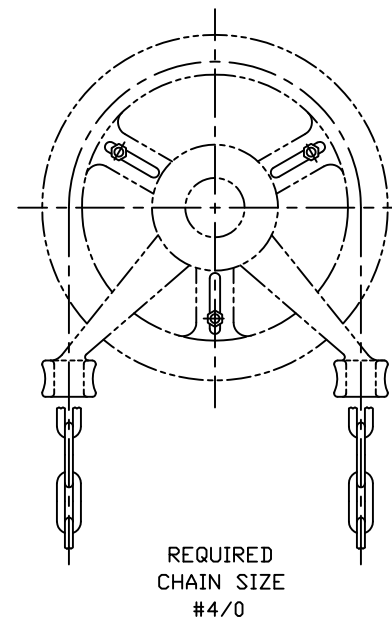
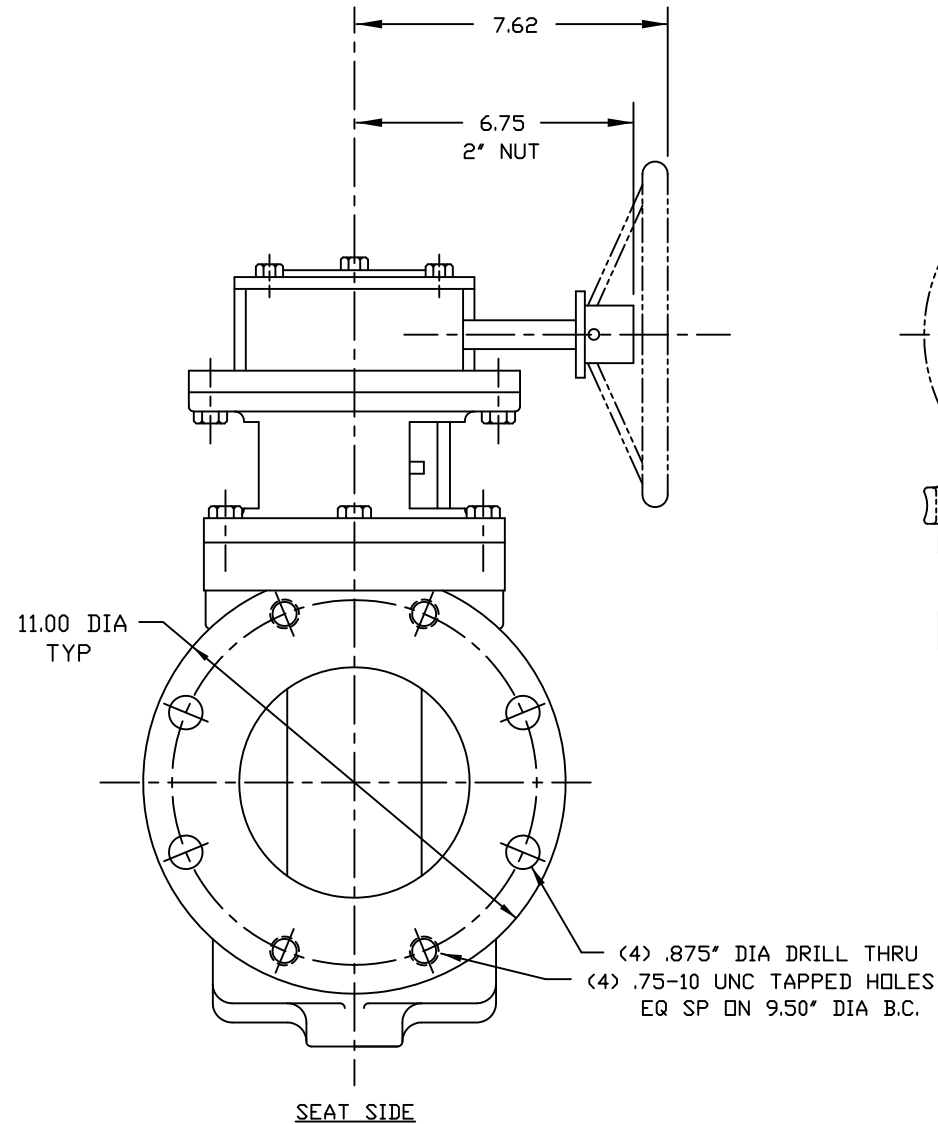
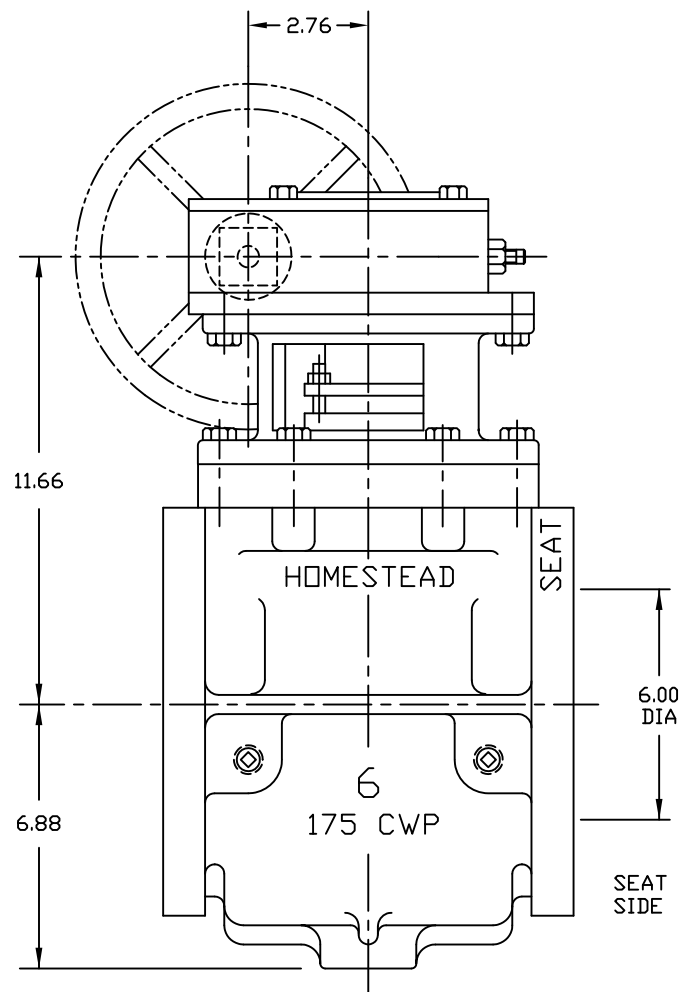


CHAINWHEEL  
(WHEN SPECIFIED)  
SHIPPED SEPARATELY



REQUIRED  
CHAIN SIZE  
#4/0

**NOTES:**

- VALVES ARE MANUFACTURED IN ACCORDANCE WITH ANSI/AWWA C517-09, "RESILIENT-SEATED CAST IRON ECCENTRIC PLUG VALVES."
- END FLANGE DIMENSIONS AND DRILLING ARE IN ACCORDANCE WITH ASME/ANSI B16.1, CLASS 125, "CAST IRON PIPE FLANGES AND FLANGE FITTINGS."
- PAINT: BLUE - SEMI-GLOSS METAL PRIMER
- ELASTOMERS AVAILABLE: BUNA-N  
EPDM  
NEOPRENE  
VITON

19	CHAINWHEEL ASSY	WHEN SPECIFIED
18	CAP SCREW	STEEL, ZINC PLATED
17	KEY	STEEL
16	GEAR	COMMERCIAL
15	SEAL	SEE NOTE 4
14	PIPE PLUG	A126 CLB
13	MTG BRACKET	A126 CLB
12	HEX NUT	STEEL, ZINC PLATED
11	STUD	STEEL, ALLOY
10	PACKING GLAND	A126 CLB
9	PACKING	V-RING, SEE NOTE 4
8	RADIAL BEARING	PERM. LUBRICATED 316SS
7	THRUST BEARING	PTFE
6	THRUST BEARING	PTFE
5	RADIAL BEARING	PERM. LUBRICATED 316SS
4	CAP SCREW	STEEL, ZINC PLATED
3	COVER PLT	A126 CLB
2	PLUG	A126 CLB/SEE NOTE 4
1	BODY	A126 CLB/NICKEL SEAT
NO.	PART NAME	MATERIAL

PARTS LIST

**HOMESTEAD® VALVES**  
A DIVISION OF OLSON TECHNOLOGIES, INC.  
160 WALNUT ST. ALLENTOWN, PA. 18102 (610) 770-1100

REV	ISSUE	BY	APPR	DATE	TITLE	NUMBER
A	S1600	RH		10/21/15	6" ECCENTRIC PLUG VALVE w/ GEAR	SK-4037