

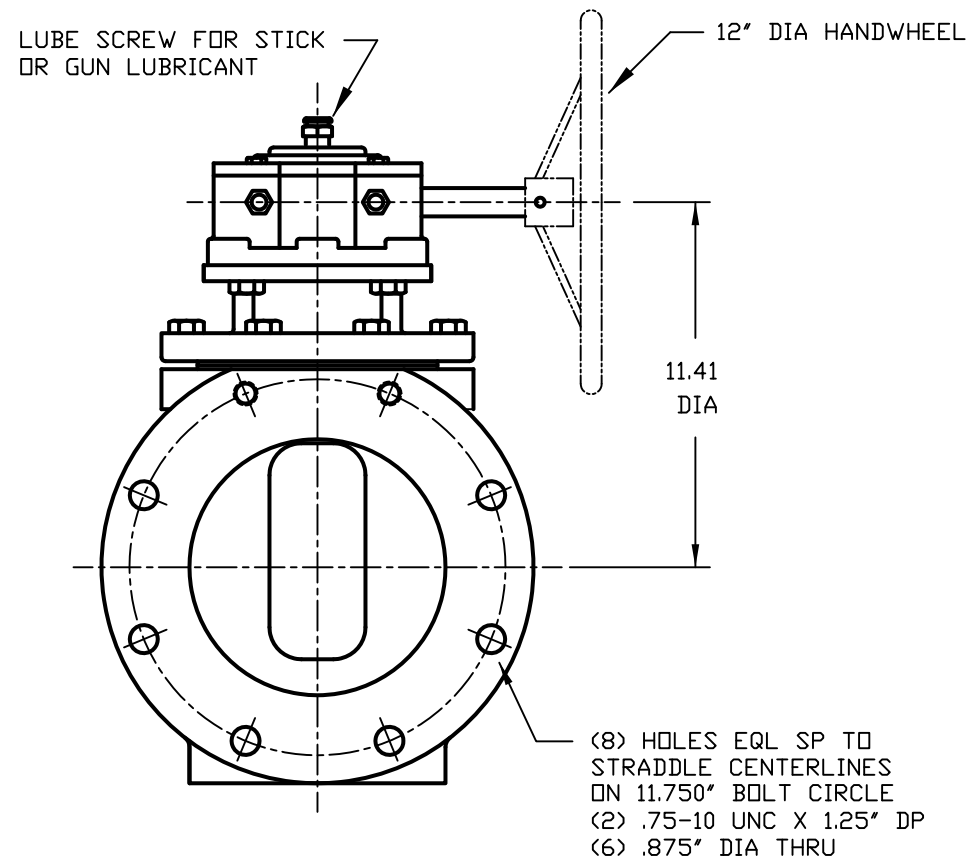
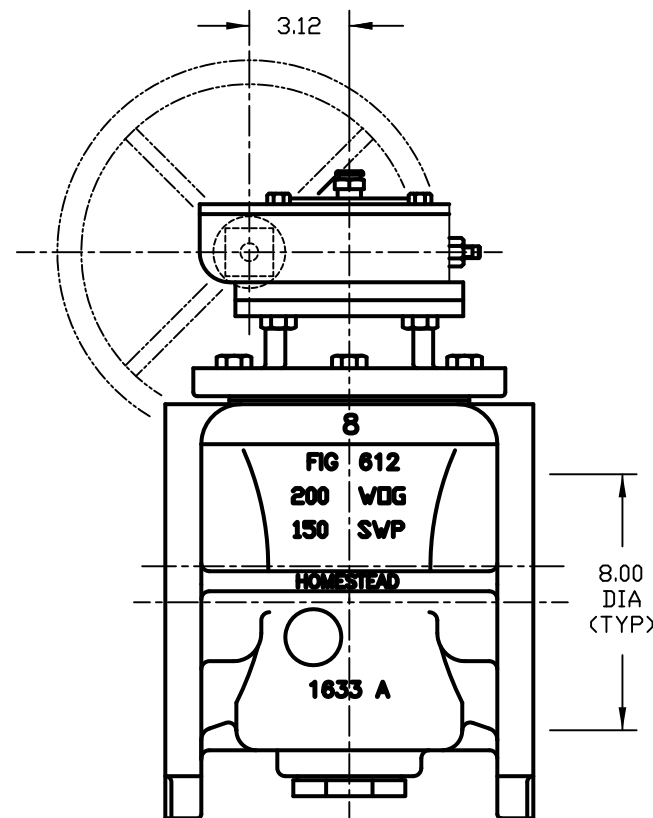
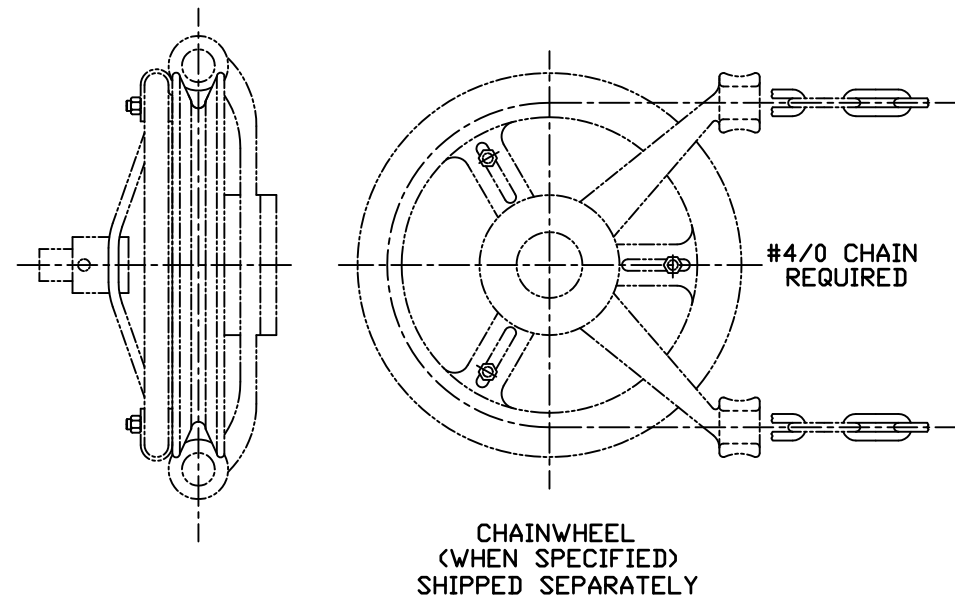
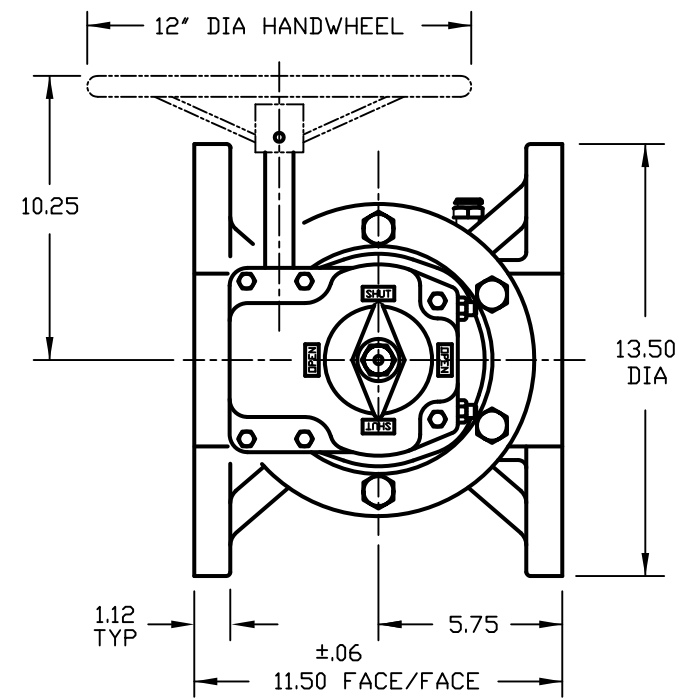
**VALVE TYPE:**  
 CLASS 125, CAST IRON LUBRICATED PLUG VALVE

**GENERAL SPECIFICATIONS:**

1. FACE-TO-FACE LENGTH CONFORMS TO ANSI B16.10 "FACE-TO-FACE AND END-TO-END DIMENSIONS OF VALVES", CLASS 125 CAST IRON PLUG VALVES SHORT PATTERN.
2. FLANGES CONFORM TO ANSI B16.1 "CAST IRON PIPE FLANGES AND FLANGE FITTINGS," CLASS 125.

**NOTES:**

1. VALVE SHOWN IN CLOSED POSITION
2. ROTATION TO OPEN POSITION IS COUNTER-CLOCKWISE.



20	CHAINWHEEL ASSEMBLY	WHEN SPECIFIED
19	GEAR WITH HANDWHEEL	COMMERCIAL
18	KEY	STEEL
17	CAPSCREW	STEEL
16	SEALANT	650S
15	LUBE FITTING	STEEL
14	LUBE SCREW	STEEL
13	CHECK VALVE	STEEL
12	O-RING	VITON
11	GASKET	NITRILE
10	HEAD SEAL	PTFE
9	DISC	PTFE
8	DISC	STEEL
7	SPRING	STEEL
6	CAPSCREW	STEEL
5	ADAPT-O-CAP	A126 CL B
4	GASKET	COPPER
3	BONNET	A126 CL B
2	PLUG	A126 CL B
1	BODY	A126 CL B
NO.	PART NAME	MATERIAL

PARTS LIST				
HOMESTEAD VALVES				
A DIVISION OF OLSON TECHNOLOGIES, INC.				
160 WALNUT ST. ALLENTOWN, PA. 18102 (610) 770-1100				
REV				TITLE
C	S2113	ND	4/18/22	8" FIG 612G
B	S1507	DM RH	5/16/19	LUBRICATED PLUG VALVE
A	S1507	RH DM	7/25/13	NUMBER
REV	ISSUE	BY	APPR	DATE
				SK-2189