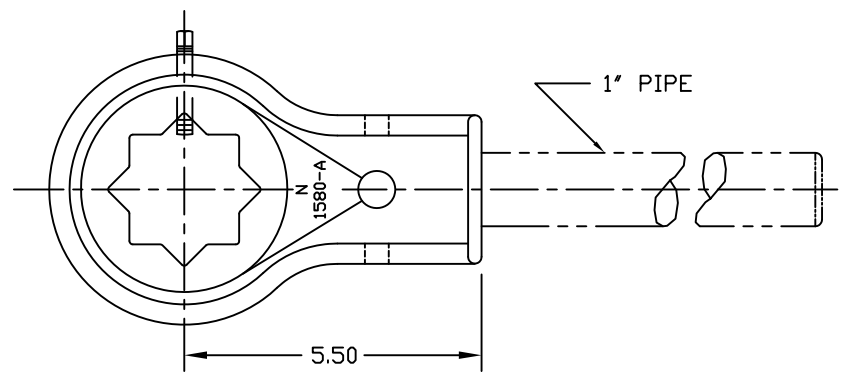
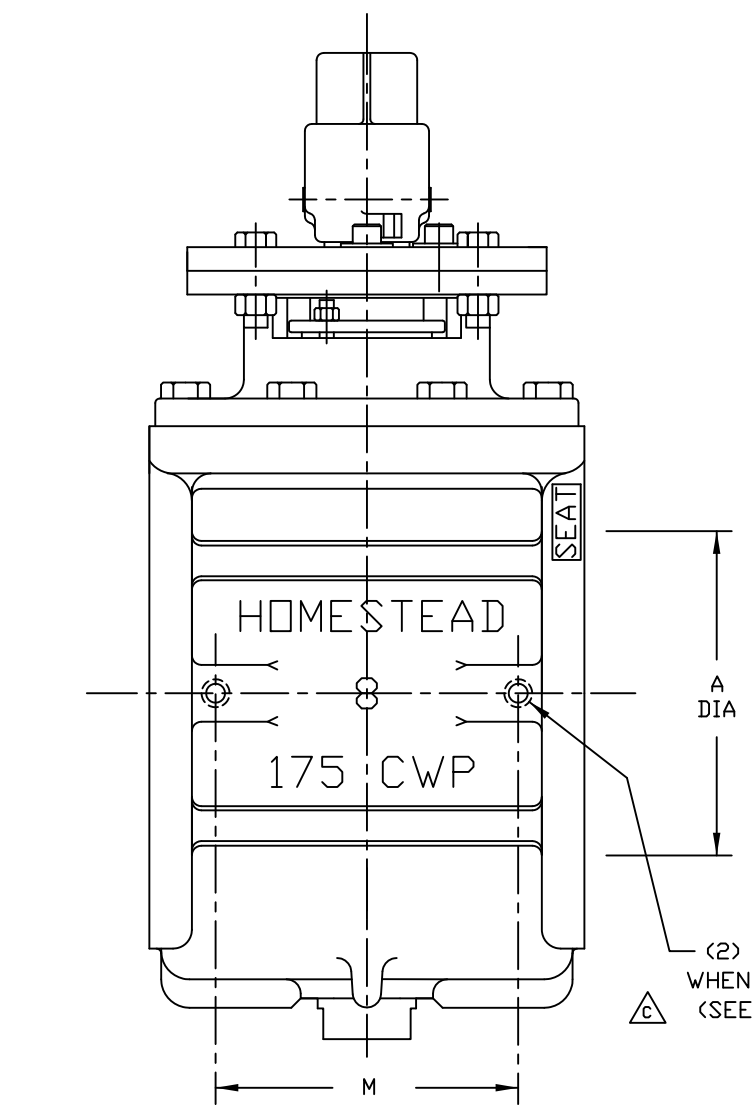


TABLE OF DIMENSIONS (INCHES)																
VALVE SIZE	NEOPRENE PART NO.	NITRILE PART NO.	EPDM PART NO.	A	B	C	D	E	F	G	H	I	J	K	L	M
8.00	1261870080	1262670080	1269770080	8.00	13.50	9.14	16.93	11.50	5.75	1.12	4	.75-10	4	.875	11.75	8.00

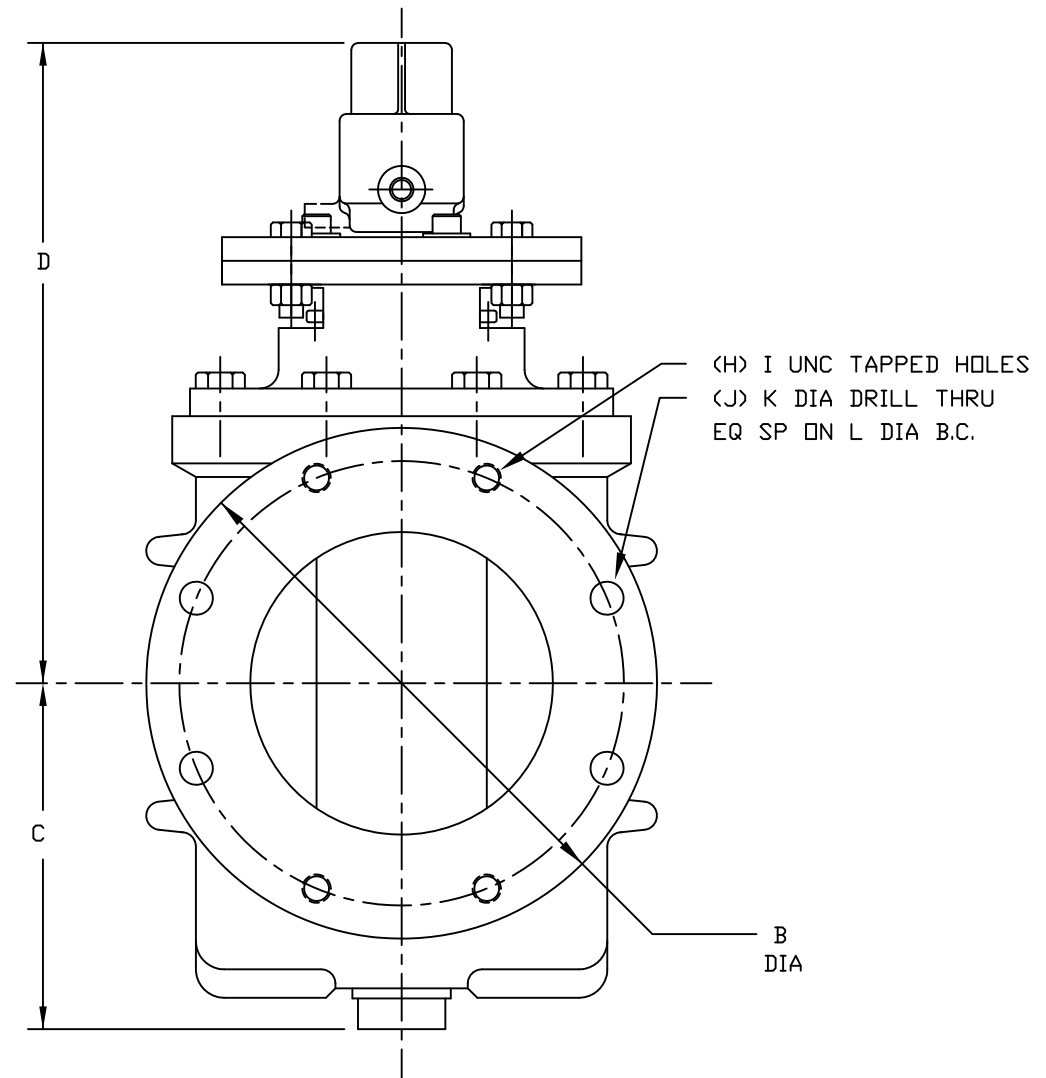


N WRENCH SOLD SEPARATELY WITHOUT PIPE HANDLE

- NOTES:**
- VALVES ARE MANUFACTURED IN ACCORDANCE WITH ANSI/AWWA C517-09, "RESILIENT-SEATED CAST IRON ECCENTRIC PLUG VALVES."
 - END FLANGE DIMENSIONS AND DRILLING ARE IN ACCORDANCE WITH ASME/ANSI B16.1, CLASS 125, "CAST IRON PIPE FLANGES AND FLANGE FITTINGS."
 - PAINT: BLUE - SEMI-GLOSS METAL PRIMER
 - ELASTOMERS AVAILABLE IN BUNA-N, EPDM, NEOPRENE, VITON
 - BY-PASS TAPS OPTIONAL.
 - WEIGHT: 270 LBS



(2) .25" NPT WHEN SPECIFIED (SEE NOTE 5)



ALL DIMENSIONS IN INCHES

NO.	PART NAME	MATERIAL
24	PIPE PLUG	A126 CLB
23	HEX NUT	STEEL, ZINC PLATED
22	CAPSCREW	STEEL, ZINC PLATED
21	MEMORY PLATE	A126 CLB
20	BONNET	A126 CLB
19	CAP SCREW	STEEL, ZINC PLATED
18	FLAT WASHER	STEEL, ZINC PLATED
17	HEX NUT	STEEL, ZINC PLATED
16	MEMORY BOLT	STEEL
15	PIN	STAINLESS STEEL
14	STOP COLLAR	A126 CLB
13	SEAL	SEE NOTE 4
12	BRAKE RING	POLYMER
11	NUT	STEEL, ZINC PLATED
10	STUD	STEEL, ZINC PLATED
9	PACKING GLAND	A126 CLB
8	PACKING	V-RING/SEE NOTE 4
7	RADIAL BEARING	PERM LUBRICATED 316SS
6	THRUST BEARING	PTFE
5	THRUST BEARING	PTFE
4	RADIAL BEARING	PERM LUBRICATED 316SS
3	ADAPT-O-CAP	A126 CLB
2	PLUG	A126 CLB/SEE NOTE 4
1	BODY	A126 CLB/NICKEL SEAT

PARTS LIST						
HOMESTEAD® VALVES						
A DIVISION OF OLSON TECHNOLOGIES, INC.						
160 WALNUT ST. ALLENTOWN, PA. 18102 (610) 770-1100						
REV	ISSUE	BY	APPR	DATE	TITLE	
D	S1600	RH		7/19/14	8" ECCENTRIC PLUG VALVE w/ 2" SQ NUT	
C	S1582	RH	DM	4/1/14		
B	S1469	RH	DED	10/11/12		
A	S131	RH	DED	5/19/02		
					NUMBER	SK-4033