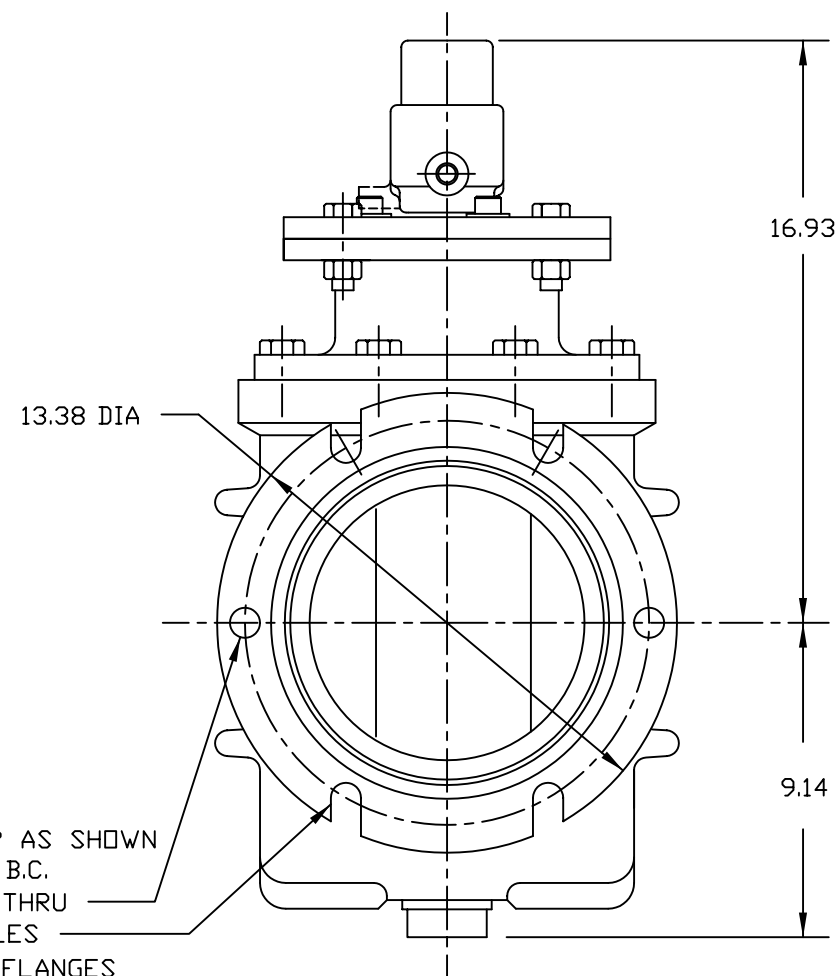
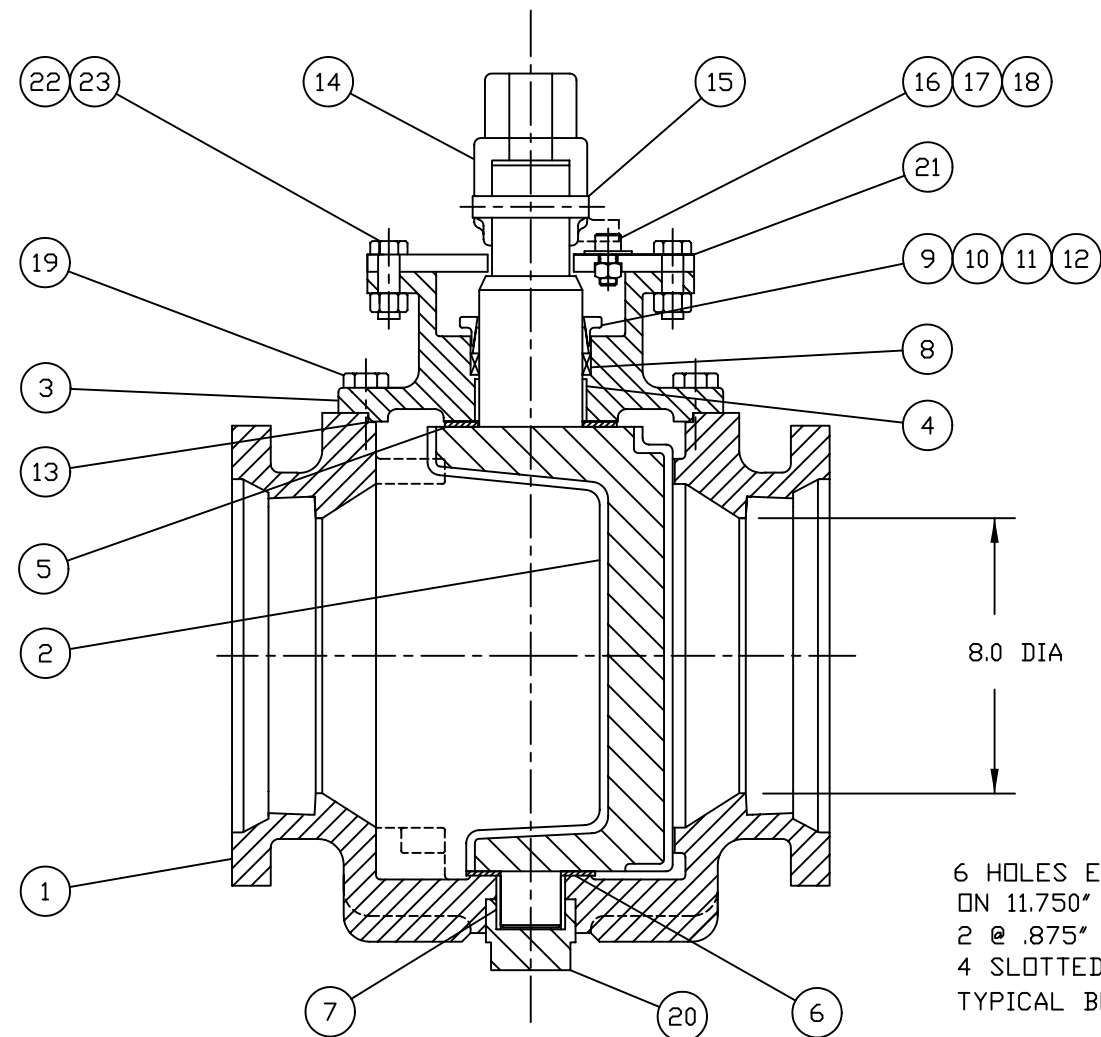


NOTES:

1. VALVES ARE MANUFACTURED IN ACCORDANCE WITH ANSI/AWWA C517-05, "RESILIENT-SEATED CAST IRON ECCENTRIC PLUG VALVES."
2. VALVES ARE RATED AT 175 PSI CWP AND APPLICABLE FOR SERVICE TEMPERATURES FROM 33° THROUGH 150°F.
3. MECHANICAL JOINT END FLANGE DIMENSIONS ARE IN ACCORDANCE WITH AWWA C111/A21.11 "RUBBER GASKETED JOINTS FOR DUCTILE-IRON PRESSURE PIPE AND FITTINGS"
4. VALVES ARE TESTED IN ACCORDANCE WITH ANSI/AWWA C517-05 AS FOLLOWS
LEAKAGE TEST:
DIRECT PRESSURE: 175 PSI FOR 15 SECONDS MINIMUM
HYDROSTATIC TEST: 263 PSI FOR 30 SECONDS MINIMUM
5. PAINT: BLACK - SEMI-GLOSS METAL PRIMER
6. VALVE SEATS ARE NICKEL
7. ELASTOMERS AVAILABLE IN NITRILE, EPDM, NEOPRENE



6 HOLES EQ SP AS SHOWN ON 11.750" DIA B.C.
2 @ .875" DIA THRU
4 SLOTTED HOLES TYPICAL BOTH FLANGES

23	HEX NUT	STEEL ZINC PLATED
22	CAPSCREW	STEEL ZINC PLATED
21	MEMORY PLATE	A126 CLB
20	BONNET	A126 CLB
19	CAPSCREW	STEEL ZINC PLATED
18	FLAT WASHER	STEEL ZINC PLATED
17	HEX NUT	STEEL ZINC PLATED
16	MEMORY BOLT	STEEL, ALLOY A574
15	PIN	STAINLESS STEEL
14	STOP COLLAR	A126 CLB
13	SEAL	SEE NOTE 7
12	BRAKE RING	TFE
11	NUT	STEEL ZINC PLATED
10	STUD	STEEL ZINC PLATED
9	PACKING GLAND	A126 CLB
8	PACKING	V-RING/SEE NOTE 7
7	LOWER RADIAL BRG	316 S.S.
6	LOWER THRUST BRG	PTFE
5	UPPER THRUST BRG	PTFE
4	UPPER RADIAL BRG	316 S.S.
3	ADAPT-O-CAP	A126 CLB
2	PLUG	A126 CLB/SEE NOTE 7
1	BODY	A126 CLB
NO.	PART NAME	MATERIAL

PARTS LIST

HOMESTEAD VALVES
A DIVISION OF OLSON TECHNOLOGIES, INC.
160 WALNUT ST. ALLENTOWN, PA. 18102 (610) 770-1100

				TITLE
				8" ECC MECHANICAL JOINT w/ 2" SQUARE NUT
REV	ISSUE	BY	APPR	DATE
A	S1060	RH		12/19/08
				NUMBER
				SK-4023