

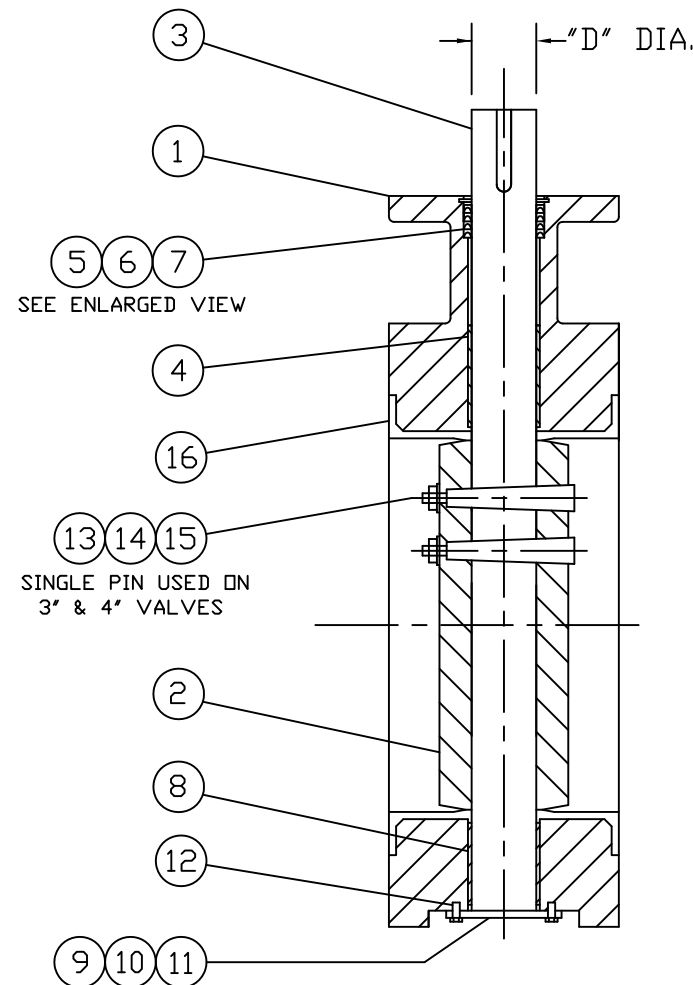
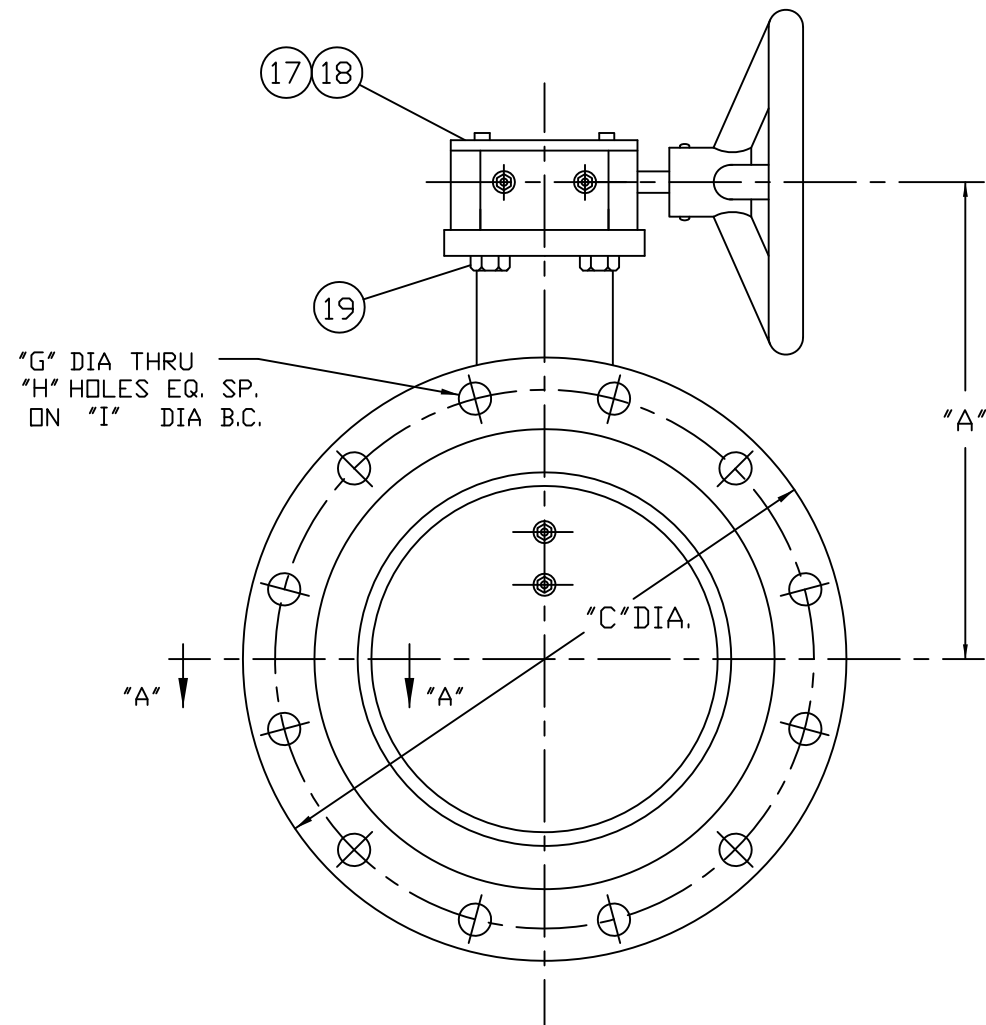
VALVE SIZE	TABLE OF DIMENSIONS								
	A	B	C	D	E	F	G	H	I
3	7.75	6.25	7.50	.562	5.00	.750	.750	4	6.00
4	8.50	6.25	9.00	.625	5.00	.937	.750	8	7.50
6	9.50	9.37	11.00	1.125	5.00	1.000	.875	8	9.50
8	11.00	9.37	13.50	1.125	6.00	1.125	.875	8	11.75
10	12.38	9.00	16.00	1.375	8.00	1.187	1.000	12	14.25
12	13.75	9.00	19.00	1.375	8.00	1.250	1.000	12	17.00
14	15.50	9.00	21.00	1.625	8.00	1.375	1.125	12	18.75

- HOMESTEAD SERIES 820 AWWA BUTTERFLY VALVE
GENERAL SPECIFICATIONS:
1. MANUFACTURED IN ACCORDANCE WITH AWWA C504, CLASS 150B, LATEST REVISION.
 2. FLANGES CONFORM TO ANSI B16.1 "CAST IRON PIPE FLANGES AND FLANGE FITTINGS", CLASS 125.
 3. BODY AND DISC TO BE COATED WITH: "NSF 61 APPROVED" FUSION-BONDED EPOXY
 4. DIRECTION TO OPEN VALVE IS COUNTER-CLOCKWISE

VALVE SIZE	NITRILE (BUNA-N) SEAT	
	HANDWHEEL PART NO.	2" NUT PART NO.
3	8202620030	8202650030
4	8202620040	8202650040
6	8202620060	8202650060
8	8202620080	8202650080
10	8202620100	8202650100
12	8202620120	8202650120
14	8202620140	8202650140

VALVE SIZE	EPDM SEAT	
	HANDWHEEL PART NO.	2" NUT PART NO.
3	8209720030	8209750030
4	8209720040	8209750040
6	8209720060	8209750060
8	8209720080	8209750080
10	8209720100	8209750100
12	8209720120	8209750120
14	8209720140	8209750140

- NOTES:
1. ELASTOMERS AVAILABLE IN EPDM AND NITRILE (BUNA-N)
SEE CHART FOR PART NUMBERS



19	CAPSCREW	STEEL ZINC PLATED
18	GEAR	COMMERCIAL
17	KEY	STEEL
16	SEAT	SEE NOTE 1
15	HEX NUT	304 STAINLESS STEEL
14	WASHER	304 STAINLESS STEEL
13	PIN	304 STAINLESS STEEL
12	CAP SCREW	STEEL ZINC PLATED
11	BOTTOM COVER	CARBON STEEL
10	WASHER	304 STAINLESS STEEL
9	PACKING	V-RING/SEE NOTE 1
8	LOWER BEARING	NYLON
7	RETAINING SPRING	CARBON STEEL
6	WASHER	304 STAINLESS STEEL
5	PACKING	V-RING/SEE NOTE 1
4	UPPER BEARING	NYLON
3	SHAFT	316 STAINLESS STEEL
2	DISC/EDGE	A536 65-45-12/316 SS
1	BODY	A536 65-45-12
NO.	PART NAME	MATERIAL

PARTS LIST					
HOMESTEAD® VALVES					
A DIVISION OF OLSON TECHNOLOGIES, INC.					
160 WALNUT ST. ALLENTOWN, PA. 18102 (610) 770-1100					
REV	ISSUE	BY	APPR	DATE	TITLE
D	S1607	RH		9/10/14	3"-14" SERIES 820 - GEAR AWWA BUTTERFLY VALVES
C	S1316	RH	DED	3/15/11	
B	S1308	RH	DED	2/18/11	
A	S762	RH	DED	3/10/06	
					NUMBER
					SK-5002