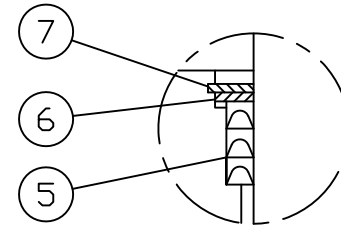
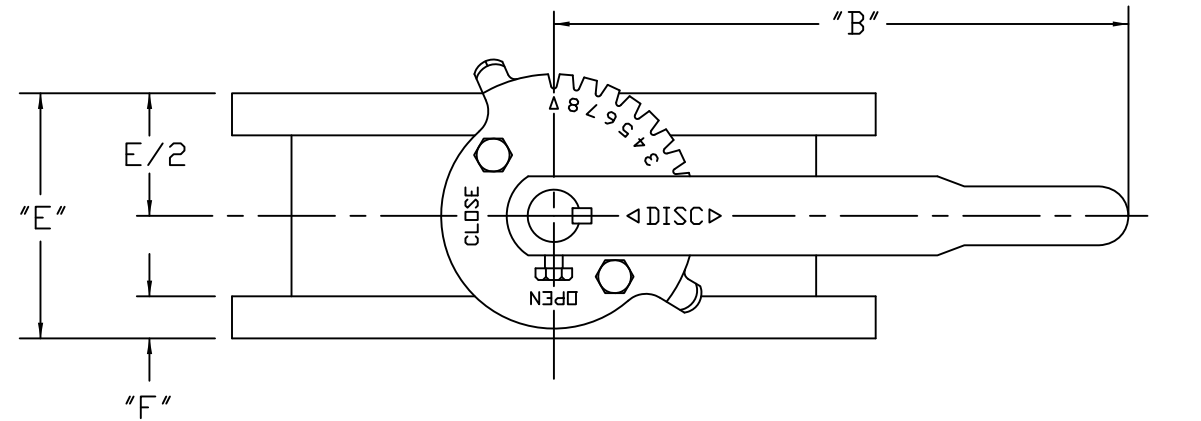


SECTION "A-A"

VALVE SIZE	PART NUMBERS		TABLE OF DIMENSIONS								
	NITRILE PART NO.	EPDM PART NO.	A	B	C	D	E	F	G	H	I
3	8202670030	8209770030	7.50	10.25	7.50	.562	5.00	.750	.750	4	6.00
4	8202670040	8209770040	8.25	10.25	9.00	.625	5.00	.937	.750	8	7.50
6	8202670060	8209770060	10.00	17.50	11.00	1.125	5.00	1.000	.875	8	9.50
8	8202670080	8209770080	11.50	17.50	13.50	1.125	6.00	1.125	.875	8	11.75

NOTES:

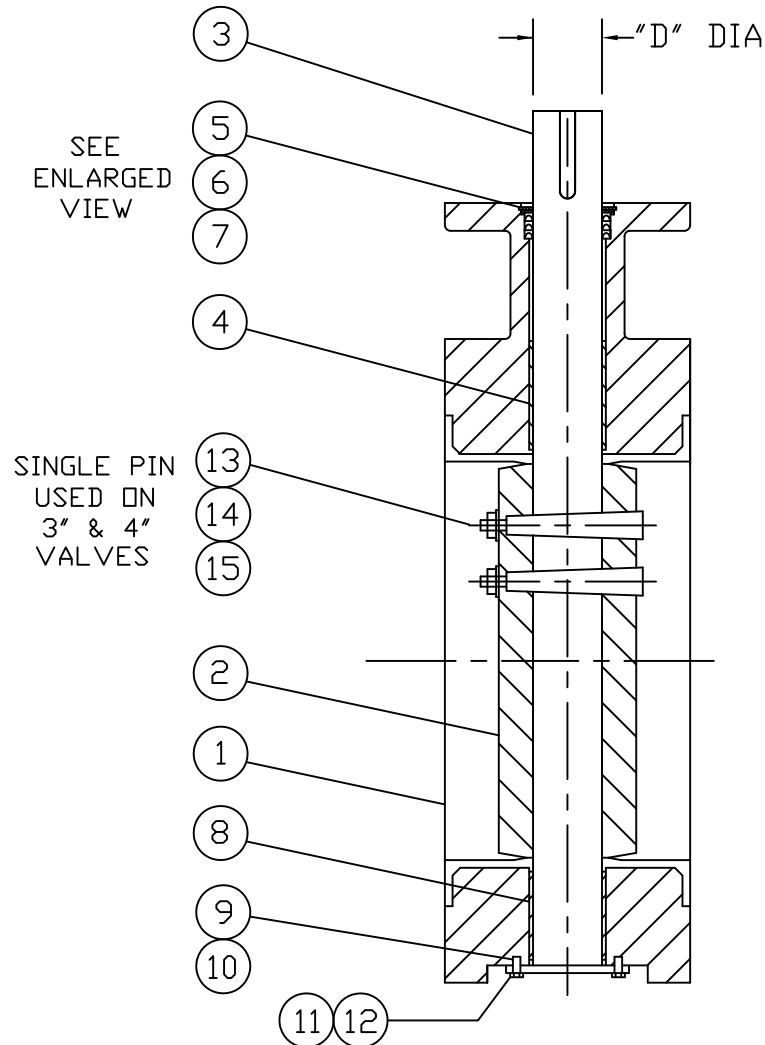
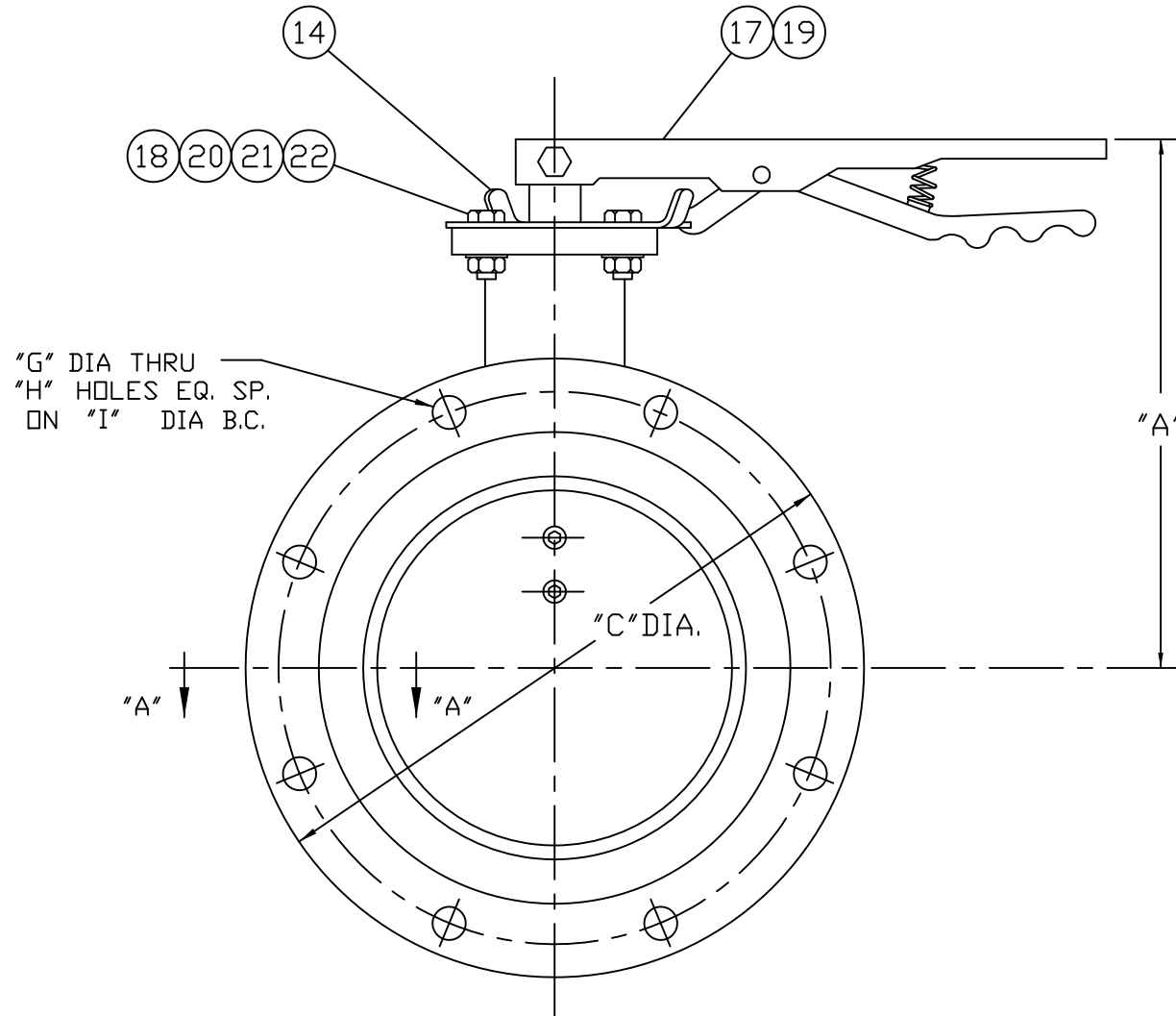
- ELASTOMERS AVAILABLE IN EPDM AND NITRILE (BUNA-N) SEE CHART FOR PART NUMBERS



ENLARGED VIEW

HOMESTEAD SERIES 820 AWWA BUTTERFLY VALVE GENERAL SPECIFICATIONS:

- MANUFACTURED IN ACCORDANCE WITH AWWA C504, CLASS 150B, LATEST REVISION.
- FLANGES CONFORM TO ANSI B16.1 "CAST IRON PIPE FLANGES AND FLANGE FITTINGS", CLASS 125.
- BODY AND DISC TO BE COATED WITH: "NSF 61 APPROVED" FUSION-BONDED EPOXY
- DIRECTION TO OPEN VALVE IS COUNTER-CLOCKWISE



22	HEX NUT	STEEL ZINC PLATED
21	WASHER	STEEL ZINC PLATED
20	CAP SCREW	STEEL ZINC PLATED
19	LATCH LEVER	COMMERCIAL
18	LATCH PLATE	COMMERCIAL
17	KEY	STEEL
16	SEAT	SEE NOTE 1
15	HEX NUT	304 STAINLESS STEEL
14	WASHER	304 STAINLESS STEEL
13	PIN	304 STAINLESS STEEL
12	CAPSCREW	STEEL ZINC PLATED
11	BOTTOM COVER	CARBON STEEL
10	WASHER	304 STAINLESS STEEL
9	PACKING	V-RING/SEE NOTE 1
8	LOWER BEARING	NYLON
7	RETAINING SPRING	CARBON STEEL
6	WASHER	304 STAINLESS STEEL
5	PACKING	V-RING/SEE NOTE 1
4	UPPER BEARING	NYLON
3	SHAFT	316 STAINLESS STEEL
2	DISC/EDGE	A536 65-45-12/316SS
1	BODY	A536 65-45-12
NO.	PART NAME	MATERIAL

PARTS LIST

HOMESTEAD® VALVES  
 A DIVISION OF OLSON TECHNOLOGIES, INC.  
 160 WALNUT ST. ALLENTOWN, PA. 18102 (610) 770-1100

REV	ISSUE	BY	APPR	DATE	TITLE	NUMBER
D	S1607	RH		9/7/14	3"-6" SERIES 820 - LEVER AWWA BUTTERFLY VALVES	SK-5001
C	S1458	RH	DED	9/25/12		
B	S1316	RH	DED	3/16/11		
A	S762	RH	DED	3/10/06		
REV	ISSUE	BY	APPR	DATE		